

Historic, Archive Document

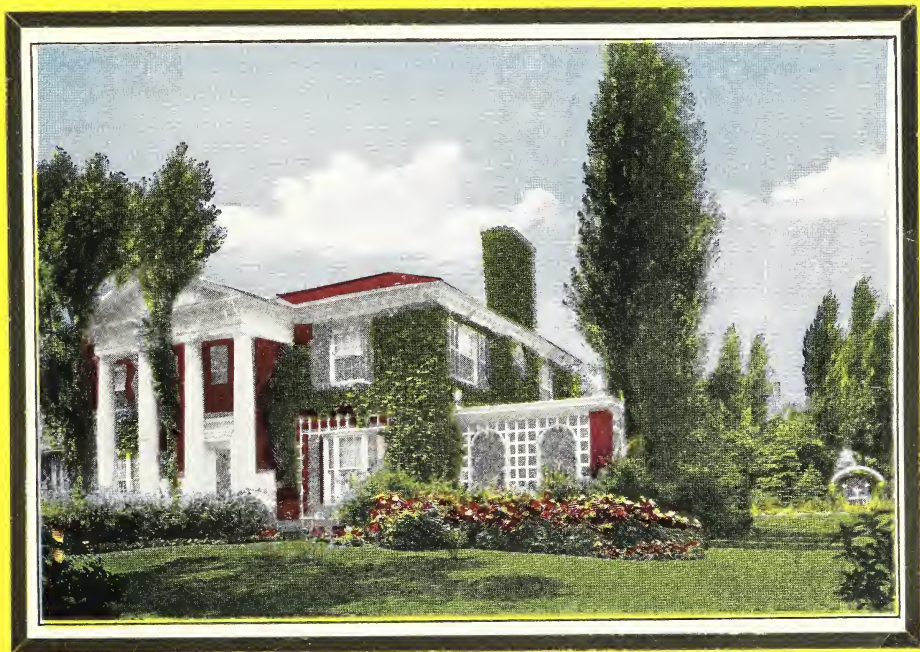
Do not assume content reflects current scientific knowledge, policies, or practices.

62,25

1928



BROTHERS NURSERY CO.
MAIN GROUNDS, OFFICE AND PACKING SHEDS EARL AVE. AND
CASON STREET. NURSERY TRACTS EAST UNION STREET

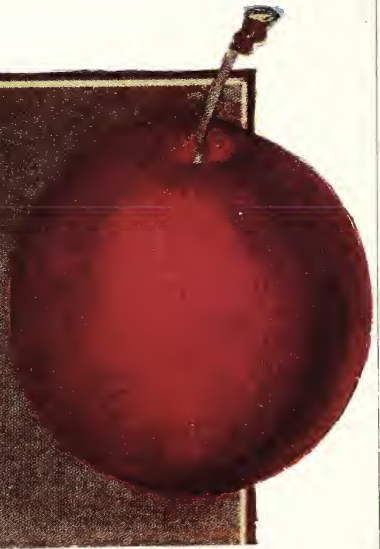


Fruit and Ornamental Trees
Shrubbery and Small Fruits
LAFAYETTE, IND.



EARLY RICHMOND CHERRIES

Few trees bear such an abundant amount of fruit each year as the cherry. The Early Richmond is one of the best. See page 10.

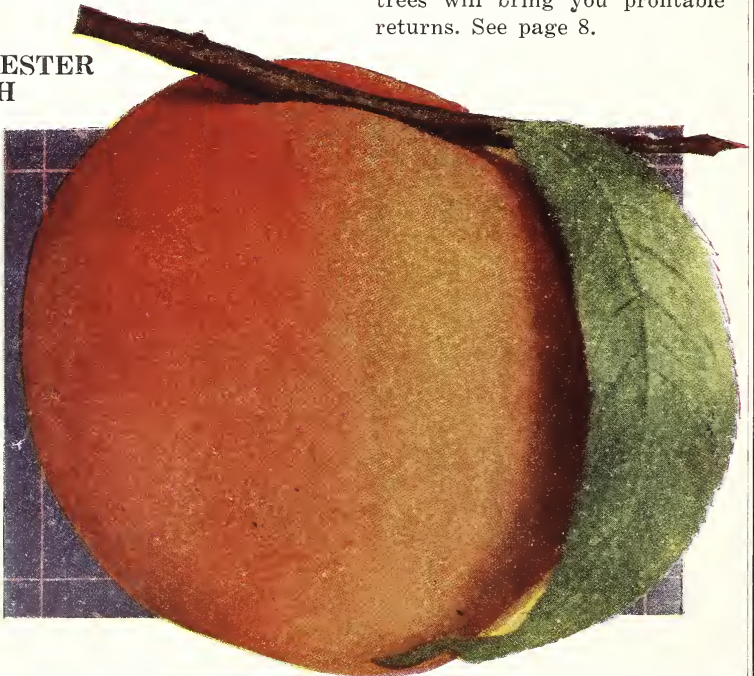


BURBANK PLUM

Plums can be grown in more limited space than most fruit trees and you can easily find space for a few. The Burbank is a vigorous grower and the market for this fine, large plum is never overstocked. These trees will bring you profitable returns. See page 8.

THE ROCHESTER PEACH

Peaches hold their place as second only to the apple in the United States. And among the many luscious varieties the Rochester has come to the front as one of the most reliable. The trees are strong growers, hardy and productive. The fruit is a yellow freestone. Extraordinarily sweet, of large size and early. Keeps and ships well. See page 8.



Policies of Fry Brothers Nursery

Each year our Catalog goes out to many thousands of our customers and prospective planters of Nursery Stock. We feel that you can more fully appreciate and understand it when you know that we wrote the Catalog ourselves. We have not employed some high priced artist with the gift of high sounding words to make things appear tempting and beyond the reach of all common reasoning. We may have a homely way of telling you things, but every statement made is the facts and nothing but the facts.

As well as to set forth the high Quality of our Nursery Stock, we also aim to make this book helpful and profitable to you. We wish to ask a favor right now, and that is to pass this catalog on to a friend when you are through with it, because we count every one of our customers a friend and we like to think that in this modern day of cold, impersonal Business Corporations that this Nursery Company has not forgotten that its Customers are its friends. We believe in the old principles of sturdy quality, honest value, and friendly, open square dealing in every transaction. We have always believed that if the right thing was done with our Customer that the business would take care of itself. So we again ask you to give this book to a friend or some one who will appreciate it. We will gladly send you another copy.

It is only in the last 20 years that the great change has come in the Nursery Business. Far more than half of all Nursery stock is sold by catalog. As people began to eliminate the Nursery Agent they found it more satisfactory to buy their trees and plants direct from the Nursery. Besides the great saving of cost it saves the many mistakes caused by repeated handling. Most of us must buy our trees away from home, a Nursery can not exist from the sales of the surrounding community or a nearby town. So to obtain a trade to keep an output for their fields of growing stock the Nursery must employ Agents in distant states or send out catalogs. Few of us have a Nursery within one or two hundred miles of our home.

We have made many improvements in the matter of packing and shipping Nursery stock in the past years. Today we can ship you an order of trees and shrubs and deliver the stock to you in another state in better growing condition than we could 20 years ago when the Customer went down our rows and picked out an Apple or Shade tree and it was dug out and placed in his wagon or buggy in too much of a hurry for us to give it care or protection.

We know that you will find it interesting and profitable to read the following pages of our 1928 catalog. We are extending our sincere thanks for the kindness of our old Customers and we will appreciate the favors new Customers may have for us and will do our very best that their planting shall be a most gratifying and profitable improvement to their homes.

Very sincerely yours,

JOHN D. FRY,

Fry Bros. Nursery Co., Lafayette, Indiana



Plant an Orchard for Pleasure and Profit

General Instructions to Customers

EVERY ORDER—Acknowledged on receipt of same.

TRANSPORTATION CHARGES—We pay the Express or Parcel Post charges on all our Nursery Stock. In remitting us the catalog price of stock it is the only cost to you. We do not ship by freight as it is a risk.

OUR PRICES—Are very reasonable when you consider the fact of all carrying charges being paid by us. We have never attached an exorbitant price to any tree or plant we sell.

PRICES AT PACKING SHEDS—Are the same as in this catalog. We absolutely can make no lower prices to those calling at Nursery Grounds for their stock than the customer who favors us with his order by mail. Every consideration and attention will be given to the one who has sent in his order by letter. We appreciate his trust and confidence.

SALES ON SUNDAY—Under no considerations will our grounds, office or packing sheds be open for sales or any transaction of business whatsoever on any Sunday.

ORDER EARLY—It is to your advantage to order early before rush of shipping season. In booking your order early you are sure of receiving every item you may order. Your order will not be assembled or shipped till the future date you specify when your ground is ready.

SHIPPING SEASON—We can usually start to digging stock near March 10 and continue up till middle of May. The fall season is usually near October 1 and up till hard freezing weather near December 1.

TERMS—Cash with order, or you may send any small sum and we will gladly book order with every item as you wish and then balance can be sent when shipment is to be made.

METHOD OF SENDING MONEY—Don't send money loose in mail. You may send your own personal check, or money order or registered letter.

COMPLAINTS—If there be any shortage no matter how small or any single thing wrong with shipment in any manner don't hesitate to inform us soon after arrival so we may investigate and make good any error on our part.

C. O. D. SHIPMENTS—Our rules are not to make any C. O. D. Shipments. Such shipments are held up by different clerks and regulations of both the Express and Postal services. The stock is longer on the road. Our guarantee is a protection to our customers. They may take their shipment to their home and after opening the packages or boxes and finding stock in any single item that is not up to our high standard of quality simply notify us of the fact and we will make good to the satisfaction of the customer.

SELECTION OF STOCK FROM NURSERY ROWS—Starting with this season this Nursery will discontinue this practice. The facts are this: A customer in walking along a row of 200 trees will notice that the great majority are nice straight, well formed trees and also that somewhere along that row there is one single tree that, all points considered, is just a little better than all the others. Of course we are asked to dig this tree. We do not consider this fair to the customer who has placed his trust in us by sending in his order by mail. We are going to send him these best trees just the same as if he were present and looking at the stock as we dig and assemble it.

SUBSTITUTION—We know how anxious the customer is to receive only the exact variety of any tree or plant he has ordered. We may, late in season, be out of some items and substitute one very similar, but if "No Substitution" is written on order we will refund money and not substitute in your shipment for the stock we are out of.

FRY BROTHERS' GUARANTEE

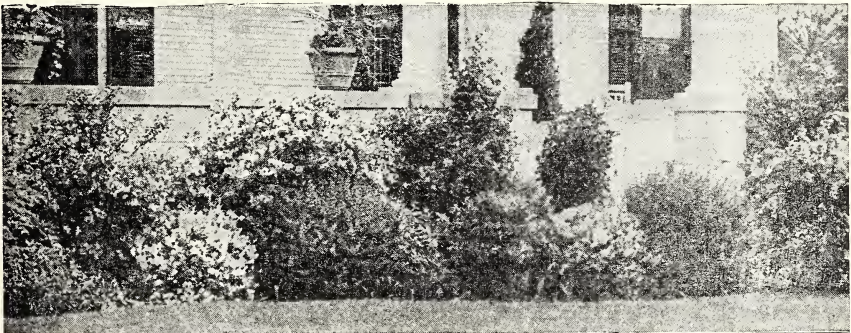
We guarantee to place our stock in your hands in good growing condition, to be alive, vigorous, free of insects and disease, and to be true to the label under which it is sold. In case of error we will replace all stock that may prove untrue or not up to the description in this catalog. We cannot be held accountable for any sum greater than the purchase price of each or any item. Our every effort is made that mistakes shall not occur.

YOUR ORDER WILL BE SHIPPED THE DAY YOU SAY

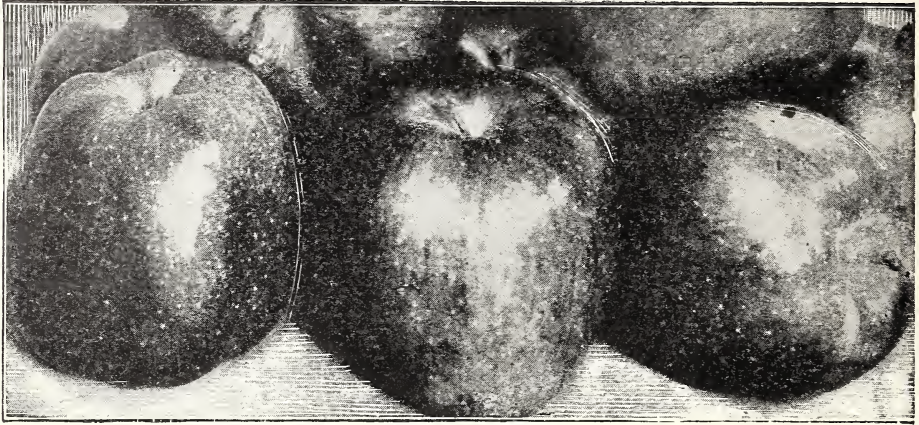
We mean every word of the above statement. Maybe you have already had the experience of having trees and plants coming days and even weeks later than you expect them, and if so you will agree with us that there is nothing more aggravating. And it is often even worse for a shipment to be hurried to you a month ahead of time when winter is still here and you have no way to handle the stock. We make this promise to you, that we will have your order at your destination on about the day you direct. It will take mighty bad weather to cause us to fail and even then you may look for your trees the next day. And we furthermore agree to make good this promise up and through the month of April. To enable us to do this we are making a rule that likely no other Nursery in the country is doing and that is promptly on the first day of April and through the entire month our office and packing sheds and grounds will be closed against the filling of any orders for customers calling in person. In the past this practice has caused the loss of most valuable time of our most skilled help right at the critical time in April. This help could have gotten out a dozen orders by express or mail in the time required for the personal service given the one customer buying direct in the packing sheds. This practice, we feel, is not fair to customers who have so greatly favored us with their orders by mail and to whom we have made the promise of shipment on the day they have every right to expect it. So get your order to us early if possible, but if you find time has slipped by and it is into April before you send us your order by letter. Just let your orders come ahead. Your order must and will go forward the day you say. Our every effort will be concentrated to serve our mail customers. This Nursery has many friends in Indiana and the surrounding states. More than 90 per cent of our business is with our mail customers and we are mighty grateful for their welcome orders and our first duty and service is to them.

SPECIAL WORD TO OUR OLD CUSTOMERS

An order from a customer who has bought of us before is most gratifying to us. It is a real compliment for, in a way, it tells us that our trees have made good. In just looking over our order files we notice some customers who have ordered from us every season as far back as seven years. We also note a great number who order every other year. And we wonder if these customers just feel they have room for one or two shrubs or trees and rather than send in such a little order wait until the following spring. Will say to these friends, don't hold off on any single bush, shrub or tree you wish. No matter about the profit to us we are more than glad to send it.



Shrubs Make Attractive Homes



Delicious Apples

Select Apple Trees

The selection of trees suitable for planting is fundamental to the success of any orchard. To plant a poor tree is to start with a handicap that may continue through the life of the orchard. The price of a poor tree may be a few cents less than one of high grade, but the economy of the transaction ends with its purchase. No one is more careful than the FRY BROS. NURSERY in the grade and selection of their trees that are supplied to customers. Not every tree that is dug from our rows is sent out to our trade. We have a great brush pile every spring where many hundreds of trees are thrown. The bon-fire is our treatment for cull trees and defectives. We feel our customers have no business with them.

PRICES ON ANY VARIETY OF APPLE OFFERED

Strong two-year-old trees, well branched.

Size, 5 to 7 feet 75c each; 10 for \$6.00; 25 for \$11.50
 Size, 4 to 5 feet 60c each; 10 for \$5.00; 25 for \$10.00

All Transportation Charges Paid by Us.

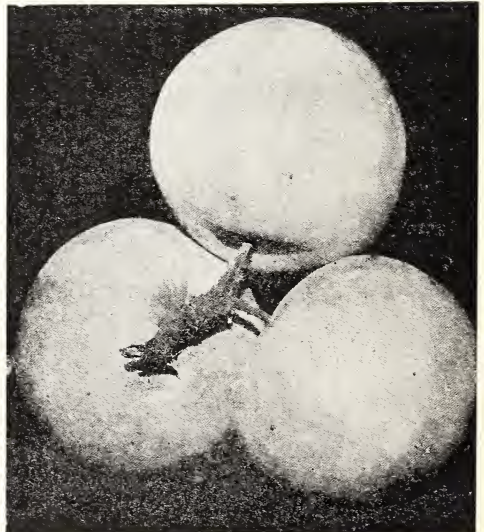
SUMMER APPLES

RED ASTRACHAN—Beautiful red apple maturing in mid-summer which is valued particularly for culinary purposes.

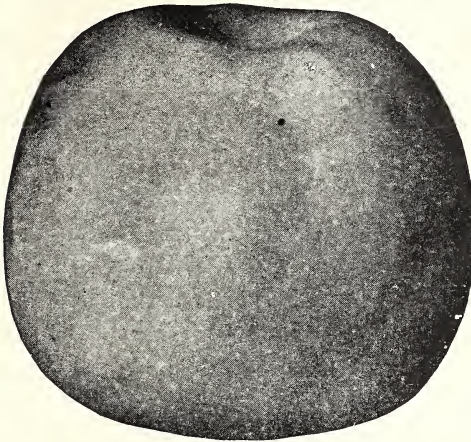
YELLOW TRANSPARENT—Tree of Russian origin and extremely hardy. Never fails. Was brought to this country by the U. S. Dept. of Agriculture. Succeeds everywhere and comes into bearing very early in life. Fruit is clear yellowish white, medium to large, excellent sub-acid flavor. The crop ripens continuously over a period of 4 weeks starting in July.

AUTUMN APPLES

DUCHESS—Another Russian variety that never fails to bear each year. Is an abundant and steady bearer. Fruit is medium to large, yellow streaked with red. A superior apple for early market. Apples hang well to the trees and run uniform in size and color.



Yellow Transparent Apple



Grimes Golden Apple

GRIMES GOLDEN—This variety ranks as one of the most popular apples in cultivation. The tree is a moderately strong grower with spreading branches, and the fruit is a standard of quality among apples. Grimes ripens with the Jonathan and the two make excellent running mates. It matures in October, but city markets usually offer it through the holiday season and into February. As a class red apples are the most popular, but Grimes by virtue of its rich golden color and superior flavor successfully holds its own among its red competitors. It should never be omitted when ordering trees in assortment.

MAIDEN BLUSH—Though not grown in large quantities anywhere it is a well known and deservedly popular early fall apple. Store keepers here in Lafayette have told us that they sell Maiden Blush apples the easiest of any variety. They ripen at a time when others it seems are not quite ready. Tree a good grower, long lived, hardy, coming into bearing young. Ripens in early September.

RAMBO—Fruit round, of medium size and good quality. Skin striped with red.

Cultivation means everything. Don't neglect a tree its first year. Give good care and droughts will not harm your new set trees.

We pay transportation charges on all our stock.

WEALTHY—A fall apple of medium size and excellent bright red color; tender, crisp, juicy, fine grained and in every way a first class apple. Is particularly adapted to cold climates because it is a variety of superior hardiness. Originated in Minnesota nearly sixty years ago, and is the leading variety in the upper-Mississippi Valley today. Wealthy is not adapted to the south, but for Indiana and states north of us it is most profitable.

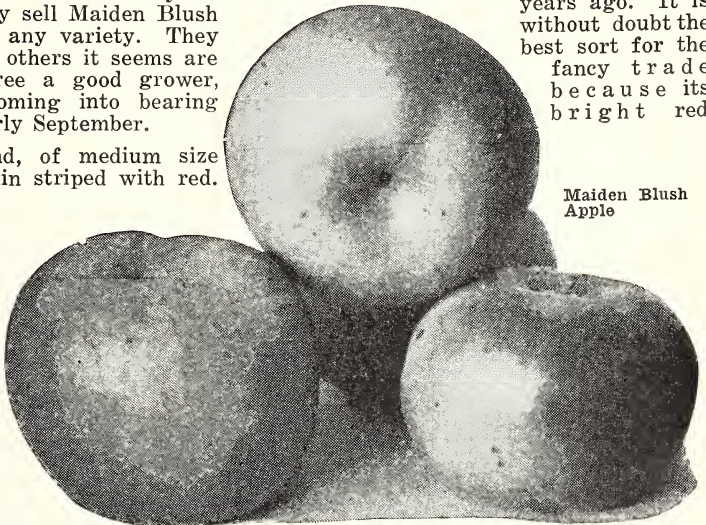
WINTER APPLES

BALDWIN—Large deep red, productive and desirable. Tree is particularly adapted to the lighter soils.

BANANA—Large, very showy, roundish, deep yellow with red cheek. November till spring. Has a banana perfume, tender and delicious.

DELICIOUS—An Iowa apple which has probably received more exploitation in recent years than any other one variety. It has been thoroughly tested in all parts of the country and found to thrive under a wide range of conditions. Fruit averages large and uniform in shape, which is conical, "broadly ribbed" and terminates at the blossom end in five distinct knobs. Delicious is a beautiful apple, blushed and striped with light and dark red, while on the shaded side color is usually yellow. Tree is one of the strongest growers in the nursery row and orchard. Our strain of trees is genuine.

JONATHAN—Few if any variety of apples are grown more widely and more profitably than Jonathan. It belongs to the famous Spitzenberg class and originated in New York nearly a hundred years ago. It is without doubt the best sort for the fancy trade because its bright red

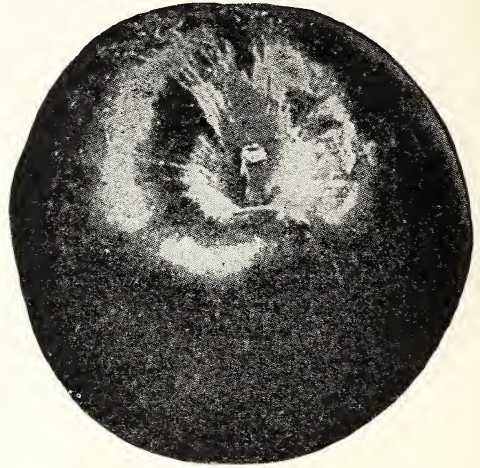


Maiden Blush Apple

color and high flavor always attract buyers. Normally the color is a deep, solid red, deepening to purplish on the sunny side. Flesh is white with sometimes a tinge of red. The tree is productive, vigorous and long lived. Jonathan thrives best in fertile ground and will respond most favorably to any cultivation. It comes into bearing very early in life. Ripens in late October and keeps well in ordinary cellars.

McINTOSH—A splendid red apple for the northern states and higher altitudes where it matures in late fall. Not a profitable variety in states to the south of us.

STAYMAN'S WINESAP—Originated by the late Dr. J. Stayman of Leavenworth, Kansas. Stayman succeeds almost everywhere and can be planted with complete assurance of its great value. Stayman is striped and splashed with yellow, while the common Winesap is an all over red apple. The tree makes a strong overhead vigorous growth and bears annual crops of splendid fruit. Seems to prefer dry soils to those which are rich and heavy. Quality the finest. A superior variety in every respect. Probably the best all purpose apple in existence. Trees get into



Jonathan Apple

profitable bearing in their fifth year and often sooner.

TOLMAN'S SWEET—We have had so much call for a sweet apple that we are able this year to offer the best one in the winter type. It is a yellow apple that keeps well through the winter months and is a sweet variety of great merit.

Crab Apple Trees

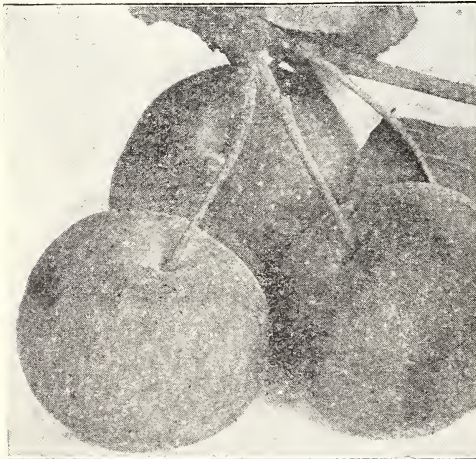
Same prices as the Standard Apple trees. FRY BROS. NURSERY pays the transportation charges on all their stock.

HYSLOP—A large Crab Apple, brilliant, dark red, will keep till February. Tree a strong grower. Quality fair.

TRANSCENDENT—A September Crab. Fruit medium to large, round, yellowish-

red cheek or almost solid red. Tree strong grower. Quality good; one of the best.

WHITNEY—A popular Crab Apple of large size. Fruit is attractive yellow striped with red. Quality very good. Hardy everywhere.

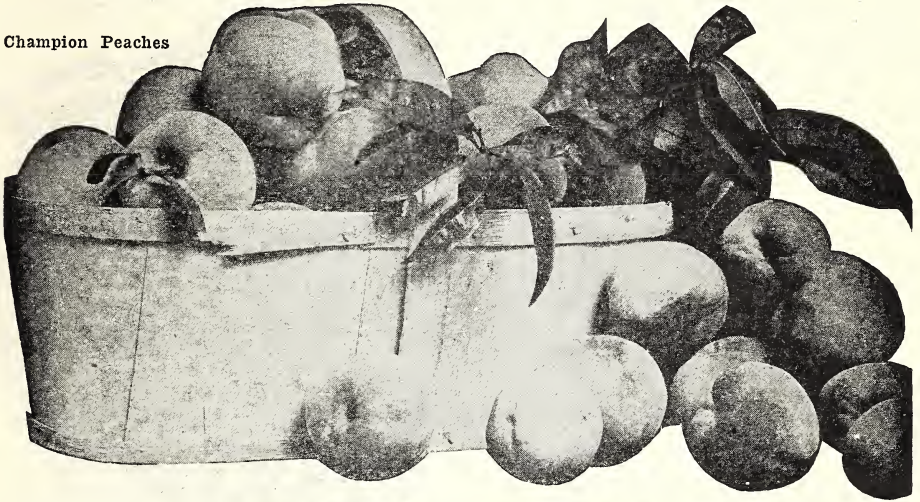


Whitney Crab Apple

THE DAY YOU WANT DELIVERY

Think what it means to receive your trees and plants on just about the day you want them. Read our statement on page 3 and our promise of the service we will give you through all the spring season. Even into and through the month of April. All through the month of April our office and packing sheds will be closed against local business so that all our help and our every effort will be employed to get out promptly and to the day the orders you may intrust us by mail. Customers are welcome at any time to visit our nursery grounds, however through the month of April there can be no admittance to our packing sheds. All help will be steadily at the work of keeping up with our shipping orders.

Champion Peaches



Select Peach Trees

The Peach holds a place second only to the Apple in the United States. It ripens over a long period and with a careful selection of varieties a succession of fruit may be had through the summer and early fall. In a way it may be said the Peach has a wider range of adaptability than the majority of Apple trees and will thrive on thinner soils. You can rest assured that the varieties we list are the most hardy and reliable for these sections.

PRICE OF PEACH TREES

5 to 6 feet.....	60c each; 10 for \$5.00; 25 for \$10.25
3 to 5 feet.....	45c each; 10 for \$3.90; 25 for \$ 8.50

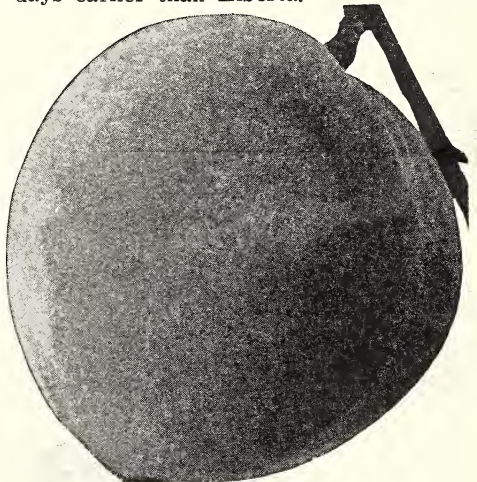
All Transportation Charges Are Paid by Us.

CHAMPION—A white flesh peach of superb quality and fine appearance. Tree is the strongest grower on the list, exceedingly productive and hardy above the average. Champion should be included in every order. It represents the quality standard among the white peaches. Ripens middle of August.

ELBERTA—A highly colored free stone variety, yellow. Elberta is the most extensively planted peach in the United States, because it is adapted to all conditions where any sort of peach can be grown and is profitable. Year in and year out the trees bear heavy crops of splendid fruit. There is a mighty big difference in the quality of the Elberta you pick ripe off your own trees and the shipped Elbertas from the south where they are gathered green. You are safe in selecting Elberta for your planting. Ripens in early August.

HALE, J. H.—When first discovered thought to be identical with Elberta. It is a yellow free stone peach recently introduced and much advertised. It is a larger peach than Elberta and the flesh

is firmer. J. H. Hale is probably as productive as Elberta and the fine record of this new variety up to date warrants its planting over a wide area. Ripens a few days earlier than Elberta.



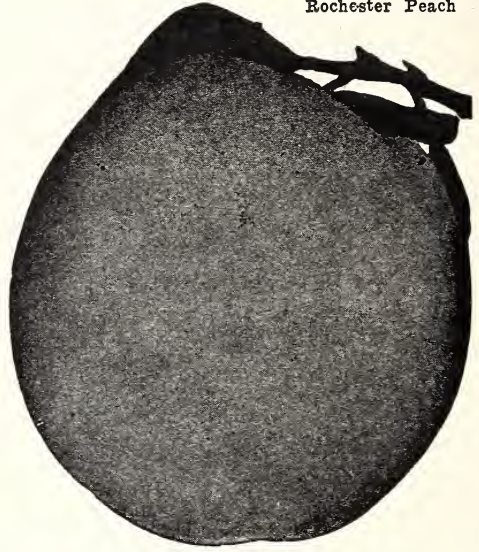
Elberta Peach

KRUMMEL OCTOBER—We are bound to think a great deal of a large, handsome peach that ripens way up in October. This is the latest ripening variety we ever saw. Free stone, flesh yellow; one of the best varieties for preserves or pickling.

MAYFLOWER—The only Clingstone peach we are listing, and also the earliest of all to ripen. Nearly covered with a bright red. Tree is a strong grower and bears very young, often second or third season after planting.

ROCHESTER—A remarkable new early, yellow, freestone peach which seems to combine both productiveness and quality. Comes onto the market ahead of Elberta and commands highest price. An ideal home orchard peach. It is now being largely planted through western New York and all the eastern states and the trees are proving hardy and vigorous. Our strain of Rochester is genuine.

Rochester Peach



PLANT A FEW PEACH TREES. IT PAYS.

Select Plum Trees

On practically any soil the Plum tree seems to thrive. With the blue varieties their preference seems to be for the heavy soils and where it is so wet and heavy that many other crops fail to grow these plums seem at their best. The varieties we list offer the greatest capacity for developing commercially.

Price of Trees, Two Years Old, Transportation Prepaid

5 to 6 feet	Each, \$1.15; 10 for \$9.00
4 to 5 feet	Each, \$.95; 10 for \$8.00

BRADSHAW—Classed as a purple plum. Probably the most largely planted plum in the east. The trees are large, hardy, bear regularly and heavily and are robust, well formed and healthy. The fruit is of

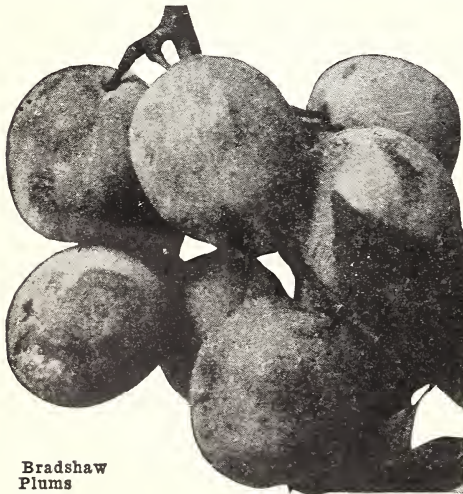
good quality, large, attractive and keeps and ships well. Semi-freestone. Ripens in early August.

BURBANK—An extra large dark red plum. The tree makes a rather low spreading growth. Well adapted to western central states; will thrive where some of the European plums fail. A prolific bearer. Flesh yellow, juicy and sweet.

DAMSON—A medium size, dark purple variety which is very productive; esteemed for preserving and good for eating out of hand. This variety is more adaptable to middle western conditions than some other types of the European plums. Ripens in late August.

LOMBARD—Fruit a violet red. The Lombard has the ability to adapt itself to about every condition of soil and climate. Tree a good grower and a prolific and annual bearer. An extra large plum with yellow flesh.

MOORE'S ARTIC—Given up to be the hardiest in bud and bloom of all plums. Small, purplish, black, juicy, sweet, an immense bearer. Ripens in September.



Bradshaw
Plums

BEAUTIFY YOUR HOME WITH ROSES

If you will plant one or more of each of the roses we have listed you will have lovely roses from June until the arrival of Winter. The rose will always retain its place in the affection of the human race because of its great beauty of form and color and its delicious fragrance. With a little extra care you may have many beautiful blossoms for yourself and your friends. We sell the hardy field grown Roses only, ready to start growing vigorously in your own garden, and sure to satisfy.



Gen. Jacqueminot

CLIMBING ROSES

You will find the Climbing Roses catalogued on page 25. Especially desirable as they are more hardy than the bush roses and more profuse bloomers. They will attach themselves to fences and trellises and will generally pass safely through the winter, if frozen back to the ground, grow rapidly the next season.

The color illustration of a Crimson Rambler on a backyard fence shows what is possible in every home with a trifling expense. All of the varieties listed on page 25 may be depended on to give as pleasing results with their different types of blooms.



Crimson Rambler Roses

KING RASPBERRIES

The Red Raspberries are greatly appreciated on the home table either fresh, canned or jam and are correspondingly popular in the market. If you plant for commercial growing, Detroit and other city markets will absorb all the fruit you have to offer at good prices and a nice profit. See page 15 for other varieties and prices.



STRAWBERRIES

This is the crop all of us can grow, and the advance guard of the hosts of ripening fruit, it is the most welcome and generally appreciated. A small plot properly handled will yield a surprising quantity of luscious berries. For the kinds we have found to be best by extensive growing on our own grounds see page 18.



Concord

FRY BROS. GRAPES

Grapes grow in out of the way places or they make as beautiful screening vine as any and you will be well repaid for planting them wherever they are placed. We suggest that the average family will appreciate a combination of some of each color, red, white and black. In bearing the varieties we list will not disappoint you but add delight to any home garden.

REINE CLAUDE—Better known as Green Gage. An extremely large and handsome yellow plum, worthy of consideration of either the amateur or commercial fruit grower. Flesh firm, sweet,

and rather juicy. Prized for culinary use more than eating out of hand. Trees grow large and vigorously; hardy, productive. Ripens in August.

Plum Trees Thrive Where Others Fail

Landscape Work

Beginning with the first of this year this Nursery Company will do no further Landscape work or planting of stock for customers, either locally or any distance from Lafayette. We have found this work has greatly interfered with our schedule of getting out our shipping orders to our mail customers. We are sure that by a careful study of the descriptions of the shrubs and trees in our catalog that our customers can arrange a planting for their homes that will be superior to the drawn plans of many of the so-called Landscape Architects. Each of us have our own particular preference as to color of flower and habit of shrubs or trees. On any points not understood we can answer your inquiries on any matters not clear to you. After April 1st it is hardly possible to take up any landscape problem with you or take the time for much discussion of any plans, drawings, etc. We have observed the shrubs listed in our catalog for many years as they have grown in our nursery rows and in different plantings. Our descriptions are reliable as to the color, size of shrub, the distance it can be expected to take up in space in your yard and also the conditions, either sunny or shady, best suited for its full development. So with this knowledge we are sure you can select your own planting at a great saving and results will also be most certain.

Profitable Apricot Trees

You can depend on the Apricot trees we offer to be hardy in this section and will bear under our conditions. The Apricot is a cross between the peach and the plum. It has a delicious flavor and is much prized for canning and drying. Trees can be expected to bear within three years after planting.

ALEXANDER—Russian, an immense bearer. Fruit medium size oblong yellow, flecked with red, sweet and delicious.

SUPERB—Originated at Lawrence, Kans. This is without doubt the best Apricot now being offered for planting under the middle western conditions. The tree is large and spreading with broad glossy leaves. In productiveness it has no superior. The fruit ripens over a long season covering a period of three weeks. Produces more fruit of larger size and better quality than any other Apricot. To all lovers of Apricots we would say plant the Superb. Prices of trees in size of 5-6 feet of either the two varieties, Alexander or Superb: Each \$1.25; 3 for \$3.15.



Superb Apricot

Starting Right is Cheapest

The first cost of the trees is the smallest expense in setting an orchard and yet it is the most important. In obtaining FRY BROS. trees you know you are starting right. In the passing years a FRY BROS. label attached to a tree has come to be accepted as a standard, not only in Indiana but in distant states. Good, reliable trees simply cannot be grown and offered at a lower price than we list. If you are making a selection from any herd of live stock you would certainly pick out the best. It is the same with trees. You don't want weaklings.

One Way to Save Our Customers Money

From our experience in the past years as we have moved along we have come to the conclusion that expensive advertising doesn't pay. We believe that the customer must pay for it in the added cost of nursery stock. For this reason, although you may have seen our advertisement in many of the reliable farm papers and journals in past seasons, you have never seen a space used of over one inch except in our own Indiana papers.

Do you know that a space of just one column wide and 10 inches long for just one issue costs \$910.00 in the Farm Journal and a half page in the Country Gentleman costs over \$1,500.00 for each time used.

We feel sure we are able to cut 15% and more from the selling price of our nursery stock than the firms who spend the great sums for this showy advertising. We also don't make up a real high priced catalog, but aim to prepare it carefully in the matter of descriptions and the truthfulness of the expectations of plantings of any stock. The policy of this company will always be to only advise our Customer on the plantings of proven things from which he may reap the returns he has every right to expect.

Select Cherries

No fruit has a wider range than the so-called Sour Cherries. They are the most commonly cultivated of all fruits and are especially popular for the garden, field and yard. The Cherry is both a fruit and ornamental tree.

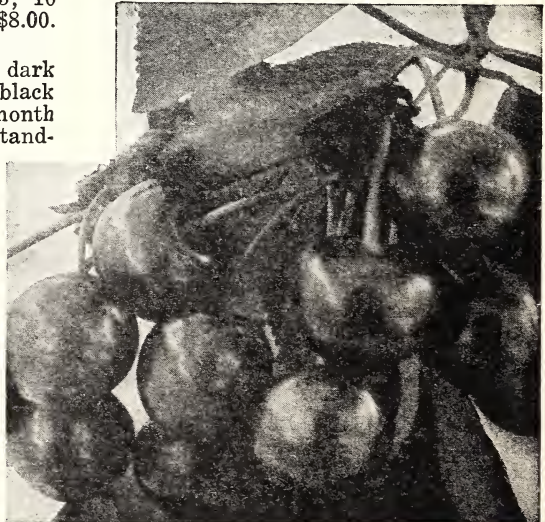
EARLY RICHMOND—This variety has for years been the leader of its season—the first fruit of its kind in the market. It thrives in various soils and climates and is everywhere vigorous and healthy. Early Richmond is indispensable in every home and orchard. It ripens about a week to ten days before Montmorenci. Tree a strong grower, making an upright spreading head. Fruit changes from light to dark red as it ripens. Excellent, sprightly flavor. Sometimes referred to as the "May Cherry". Price of strong, 2-year old trees, 5-6 ft.; each, \$1.15; 10 for \$9.00; 4-5 ft, each 95c; 10 for \$8.00. All transportation charges paid.

ENGLISH MORELLO—A very late, dark red cherry which becomes almost black when fully ripe. Ripens about a month later than Montmorenci and is the standard late sour cherry in America. Quality very good when fully ripe. Price of trees same as Early Richmond.

MONTMORENCI—The most popular cherry grown in the United States. Its supremacy is never questioned. Tree is strong, symmetrical grower. Fruit large, dark red, firm and of excellent quality. Flesh pale yellow with reddish tinge. Pit small. Don't omit Montmorenci from an assorted planting. Prices of trees same as Early Richmond.

BLACK TARTARIAN—This is

the only variety we are listing in the type of Sweet Cherry. They are not generally planted for large commercial orchards through our section and we recommend them only for a garden or yard planting. The trees grow tall and pyramidal and very ornamental. Will not bear every year but in many seasons bear a heavy crop and make up for the lost years. The fruit is very large, bright, glossy black, juicy, rich and fine. Price of trees: 2 yr.. 5-6 ft., each \$1.40; 3 for \$3.60; 4-5 ft., each \$1.15; 3 for \$3.00.



Early Richmond

See page 15 for description of the true Worden Grape, for home use.

Standard Pear Trees

Pears seem to succeed best on hill sides or rolling ground. After the trees have started off well give only sparing cultivation and let the ground go to blue grass before the trees come into fruitage. Prune trees regularly and if blight appears cut off the infected limbs at once and burn them. Cut six inches below the infected blight to insure taking all infected sap. Fruit critics have pronounced the Pear the most luscious of all fruits.

FRY BROS. PRICES ON PEAR TREES

Two year, 5-6 ft.....	Each \$1.25; 10 for \$10.00
Two year, 4-5 ft.....	Each \$1.05; 10 for \$ 9.00

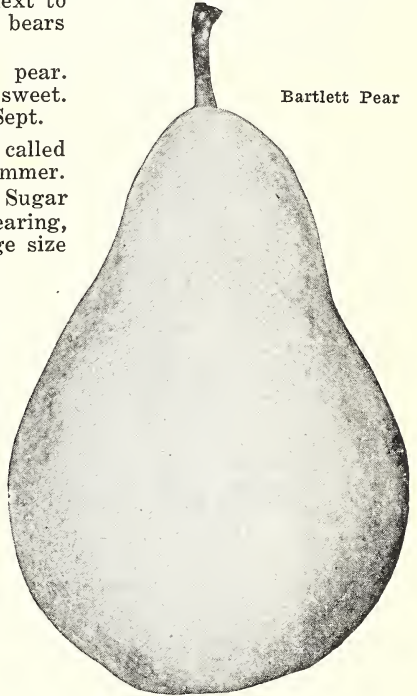
BARTLETT—Large size with beautiful blush next to the sun, buttery, very juicy and high flavored; bears early. August and early September.

CLAPPS FAVORITE—A large pale yellow pear. Flesh white, fine grained, juicy, buttery and sweet. Tree a very vigorous upright grower. Early Sept.

DUCHESS—Fruit so large that they are often called Pound Pears. Good quality, productive, late summer.

SECKEL—Early fall. Sometimes called the Sugar pear. Tree is somewhat slow to come into bearing, but is extremely productive and grows to a large size and beautiful pyramidal shape and is ornamental. Healthy, vigorous and long lived.

Bartlett Pear



Franklin, Ind., Mar. 9, 1927.
Fry Bros. Co., Lafayette, Ind.

Dear Sirs: Enclosed find my order for Berry plants. I have had stock from you for two years and was very well pleased with what you sent me. Am also sending addresses of a few friends. Yours truly, Mrs. George H. Clarke.

Gosport, Ind., Mar. 19, 1927.
Fry Bros. Nursery Co., Lafayette, Ind.

Dear Sirs: I want to thank you for the nice Shrubbery I received yesterday, also the extras you sent me. Very resp., Charles S. Mugg.

Quinces

ORANGE QUINCE—One of the best varieties for general planting. Golden yellow; round fruit of best quality. The trees we supply are large, two-year-old, 5 feet or more in height. Each \$1.35.



Orange Quince

Mulberries

In the New American variety we offer a fine fruiting type. Tree grows tall and is an ornamental. Should not be planted where the fruit will drop on the sidewalks. Fine to plant in the chicken yard. Fruit ripens over a long period. Berries are abundant, large, black and sweet. Prices on No. 1, 5-6 ft. trees, each \$1.25.



Mulberries

Asparagus

PALMETTO—This variety is much superior in size and quality to many of the old common sorts. The earliest and finest of spring vegetables. The large green shoots are sent up quickly from the crowns. For the home garden set plants about two feet apart each way and two inches deep. The commercial grower sets the plants in deep furrows. We supply the plants in large two year sizes at 10 for 50c; 25 for \$1.00; 100 for \$2.75.

Rhubarb

This deserves to be ranked among the best early products of the garden. It affords the earliest material for fine pies and fresh table sauce, continues long in use and is valuable for canning. Plant 3 feet apart each way.

LINNEAUS—Those who have never grown this superior variety will hardly recognize in it the old "pie plant". It is an early tender variety without being in the least tough or stringy, with a mild sub-acid flavor. We supply large, well-crowned 2-year old roots for 15c each; 10 for \$1.00.

Plant a few fruit trees from Fry Bros. selected stock. They pay big dividends.

Horseradish

Thrives in all soils except the lightest sand and the extra heavy clays. As a table relish Horseradish is without a superior. It is best to stand the roots on end in planting and cover two inches deep. Strong roots at price of 10 for 50c; 25 for 90c.



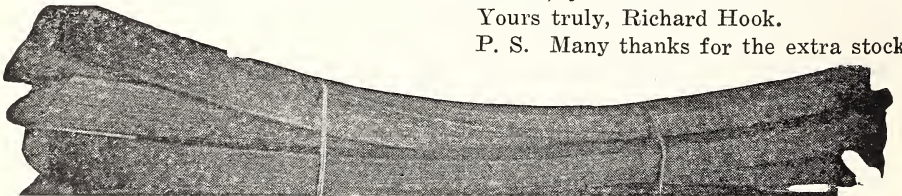
Gurnee, Ill., Apr. 5, 1927.

Fry Bros. Nursery Co., Lafayette, Ind.

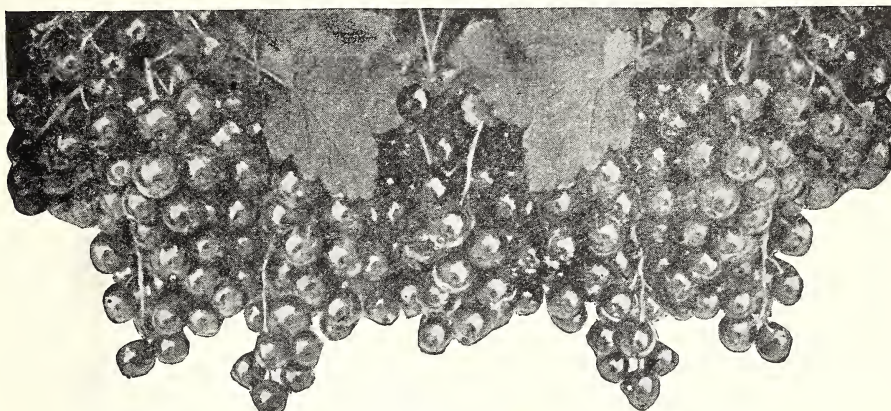
Dear Sirs: Order received yesterday. Everything in fine shape. Please send the following by return mail: 100 Asparagus, 18 Sp. Frobellei, and 2 Gardenia Climbers, yellow roses.

Yours truly, Richard Hook.

P. S. Many thanks for the extra stock.



Linneaus Rhubarb



Perfection Currant

Select Currants

Our varieties of Currants offered have been selected for hardiness, fruitfulness and general adaptability to middle western conditions. The Currant is an indispensable garden fruit.

Prices on strong 2-year-old bushes of the varieties, London Market, Wilder and White Grape: Each 25c; 12 for \$2.25. One year old bushes, Each 20c; 12 for \$1.80.

Perfection in strong, one year bushes, each 40c; 12 for \$3.50.

LONDON MARKET—Bush vigorous, upright, medium to large; color a dark red, with slightly acid flavor; very productive.

PERFECTION—Berry a bright red and very large; bunches also large and the size of berry is maintained to end of bunch. In quality it is no doubt superior to anything in the market today, being a rich, mild, sub-acid flavor with plenty of pulp and few seeds. Our strain of stock is genuine.

WHITE GRAPE—Berries large, yellow, mild. Bush large and spreading.

WILDER—Considered by many the best red Currant in our list. Clusters large, compact and easy to pick. Bush upright, vigorous and productive.

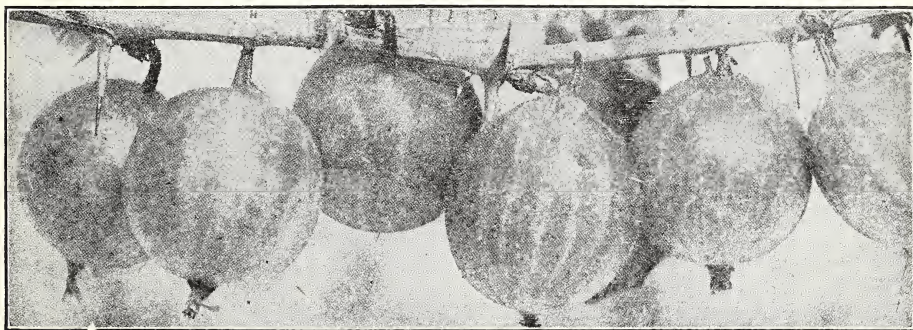
Select Gooseberries

Gooseberries, like Currants, require very little room and attention. They will prove satisfactory under orchard trees or similar semi-shaded conditions.

DOWNING—An old variety of well earned merit. Color a light green and maintains its color after ripening. Price, 2 yr. bushes, each 30c; 10 for \$2.50; 1-yr. bushes, each 25c; 10 for \$2.00.

HOUGHTON—Red when fully ripe. Vigorous grower, abundant bearer. The best all purpose Gooseberry for our section. 2-year, each 30c; 10 for \$2.20; 1 yr., each 25c; 10 for \$1.75.

We pay transportation charges on all our stock.



Houghton Gooseberries

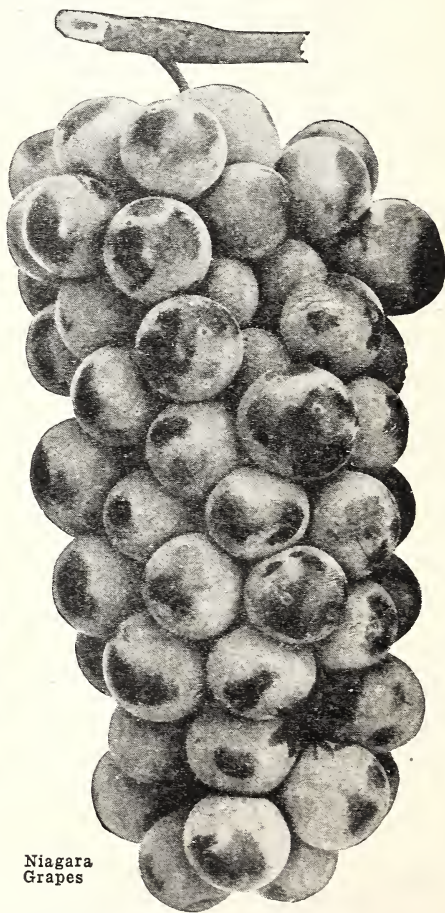
Hardy, Dependable Grapes

Grape vines come into bearing in one or two years after planting at which time they should produce three or four pounds of fruit per vine. Later on, after the plants have become fully developed from three to five tons of fruit per acre will be produced, depending on the variety and attention. Grapes will respond to the best care and cultivation, yet they will thrive under conditions of neglect and abuse. Almost every home can find room for from six to a dozen grape vines. The assortment of varieties we offer consists of those which have proven of greatest value through the country.

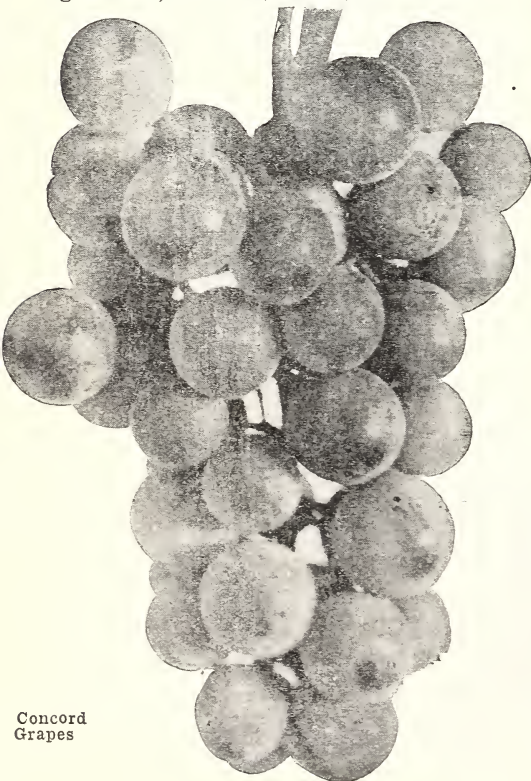
CONCORD—(Black). This is the most extensively planted variety in the United States. Probably 75% of all grapes planted are Concord because the variety thrives on a greater number of soils than any other and because it can be produced so cheaply that no other grape can compete with it. Fruit ripens in early September; medium to large in size, juicy and of fine quality. Originated at Concord, Mass. in 1843.

Prices of 2 year vines, each 25c; 10 for \$1.90; 25 for \$3.75. One year, each 20c; 10 for \$1.50; 25 for \$2.75.

SPECIAL—Extra large 3 year old vines. Have had so much call for large fruiting size stock that we have grown several hundred of these vines that should bear fruit the next season after planting. Price, each 50c, 3 for \$1.20.



Niagara
Grapes



Concord
Grapes

CATAWBA—(Red). Possesses several fine qualities, will keep till March, ripens latest of all grapes in October. Berries and bunches of medium size. Vines vigorous and hardy. Price 2-year, each 45c; 1-yr., each, 30c.

DELAWARE—(Red). Often classed as the highest quality of all grapes. Berries and bunches small. Vine vigorous and hardy, but only a moderate grower. Prefers the lighter, gravelly soils. Prices, 2-year vines, each 45c. One year, each 35c.

MOORE'S EARLY—(Black). It is hardy and productive and its large size and earliness render it very desirable. Ripens a week ahead of Concord. Price, 2 year, each 35c; 10 for \$3.00. 1 year, each 30c; 10 for \$2.50.

NIAGARA—(White). Remarkably vigorous, healthy and productive. All things considered likely the most valuable white grape in cultivation. Bunches very compact and berries large and high quality. Ripens a few days ahead of Concord. Prices, 2 year vines, each 35c; 1 year, each 30c.

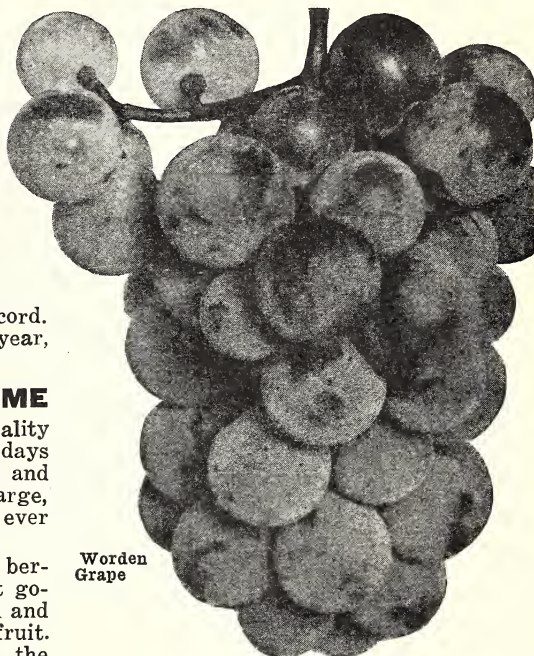
IDEAL GRAPE FOR THE HOME

WORDEN—(Black). Highest in quality of all Black Grapes. Ripens 10 days ahead of Concord. Bunches large and compact and the Grapes are extra large, in fact the largest black grape we ever saw.

Worden is not a commercial grape, berries have too tender a skin to permit going to market. Sweetest grape grown and the heavier the soil the sweeter the fruit. Every home should have a few of the Worden vines in their garden. Experience their wonderful flavor when picked fresh from the vines.

FRY BROS. GROW THE TRUE WORDEN

We grew three rows of the Worden Grapes in our vineyard before selling any



Worden Grape

of the vines. And for six years we observed their habits and qualities alongside 19 other varieties and every statement made by us is the facts from experience. They will meet your every expectation on any soil where any grape can be grown. Prices, strong 2 year vines, each 35c; 1 year, each 25c.

Hardy Raspberries

BLACK VARIETIES

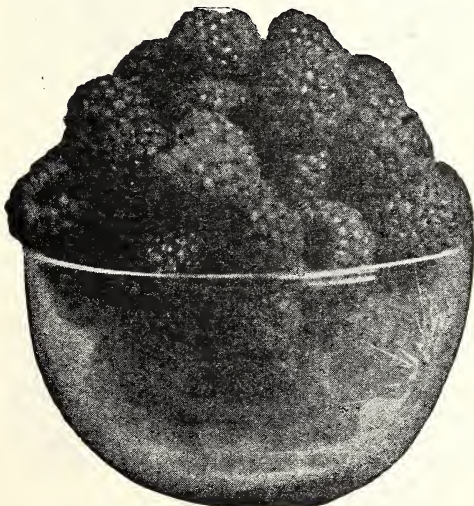
Set all varieties of Raspberries 30 inches apart in rows 6 feet apart.

CUMBERLAND—The standard Black Cap in the United States. We offer it with the full assurance that it is the most profitable and desirable market berry yet known because of its immense size, firmness and great productiveness. Its canes are exceedingly healthy and strong.

KANSAS—Originated in Lawrence, Kans. Ripens a few days ahead of Cumberland. Sweet, jet black and excellent flavor. Adaptable to the lighter soils.

Prices of strong tip plants of the two above varieties: 12 for 75c; 25 for \$1.10; 100 for \$3.50; 500 for \$13.00.

We pay all transportation charges.

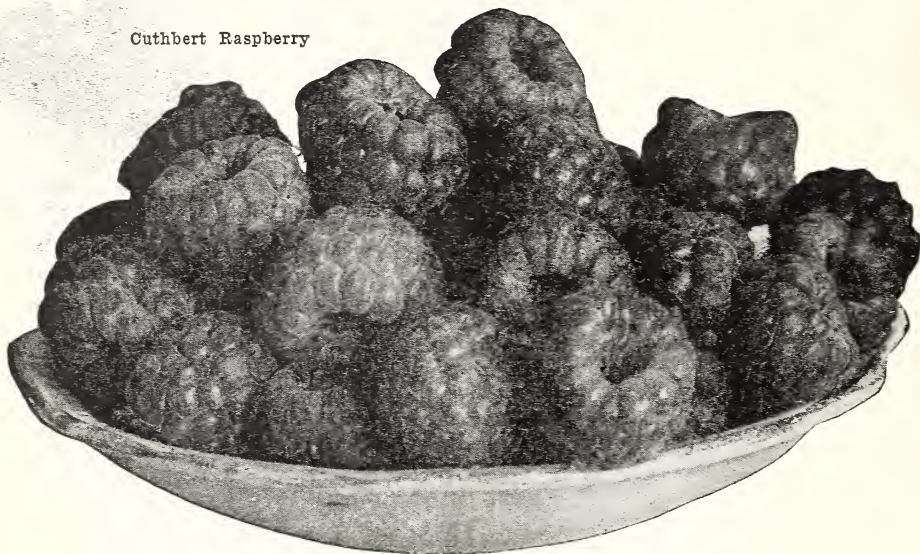


Cumberland Raspberry

If you have a friend or neighbor who is interested in high grade nursery stock, please hand him this catalogue and write us for another. We will be glad to send it to you.

HARDY RASPBERRIES—CONTINUED

Cuthbert Raspberry

**RED VARIETIES**

CUTHBERT—The quality of the old, well known Cuthbert has never been surpassed. A popular variety through the United States.

KING—Classed as the best early red. Ripens a week ahead of Cuthbert. Bright scarlet, sweet and melting. Bushes hardy and productive.

ST. REGIS—An everbearer. Can not be grown with profit commercially. Ideal for the home garden where you can expect a fall crop of berries as well as the June crop. Bushes hardy and vigorous.

Prices of either of the three named red varieties: Strong sucker plants, 12 for 75c; 25 for \$1.10; 100 for \$3.50; 500 for \$12.00.

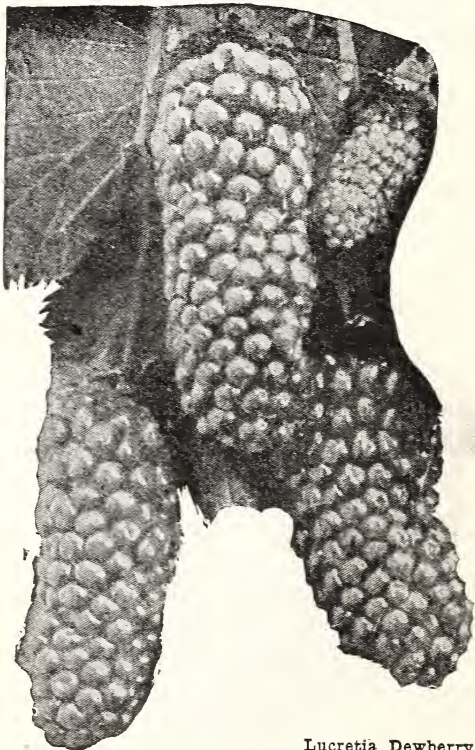
YELLOW RASPBERRIES

GOLDEN QUEEN—We have the true strain of this fine old favorite and many people are fond of the yellow Raspberry. Large, beautiful, translucent amber color, firm and productive. Canes vigorous and hardy. Price: Strong sucker plants, each 10c; 6 for 50c.

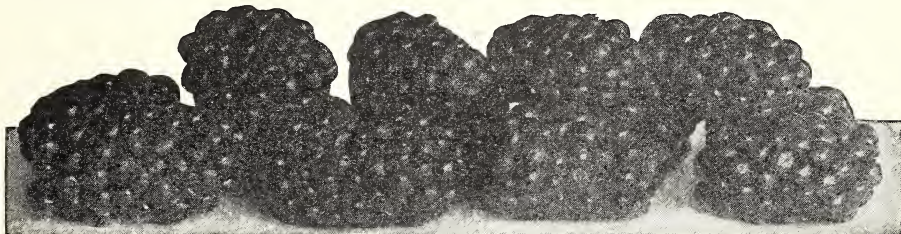
Dewberries

We propagate the Lucretia variety only as we consider it the most hardy of the several kinds in cultivation. It is the standard variety in this country. Dewberries prolong the berry season and should be more generally planted. Lu-

cretia is larger than any Blackberry, sweet and luscious. Price for strong, rooted plants, 6 for 50c; 12 for 90c; 25 for \$1.35; 100 for \$4.25.



Lucretia Dewberry



Eldorado Blackberries

Select Blackberries

Blackberries are of the same easy culture as the Raspberries and thrive on nearly all types of soil. Should be planted in rows 6 or 7 feet apart and plants 30 inches apart in rows.

ELDORADO—Largest hardy blackberry grown. We have never known canes to winter kill here on our grounds. Free from Orange rust and the best money

maker. Berries of Eldorado will bring from 50c to a \$1.00 more per crate than other varieties on the markets. There is no use in planting a blackberry that will not stand our winters. Eldorado will not disappoint you.

SNYDER—Grown in all parts of the United States. The plant does not rust and is free of disease. Vigorous, hardy and productive everywhere. Berries of medium size and fine quality; ripens a few days after Eldorado and over a long period.

Price of strong sucker plants of either the Eldorado or Snyder variety: 12 for 80c; 25 for \$1.15; 100 for \$3.80; 500 for \$14.50.

Greentown, Ind., Nov. 2, 1927.

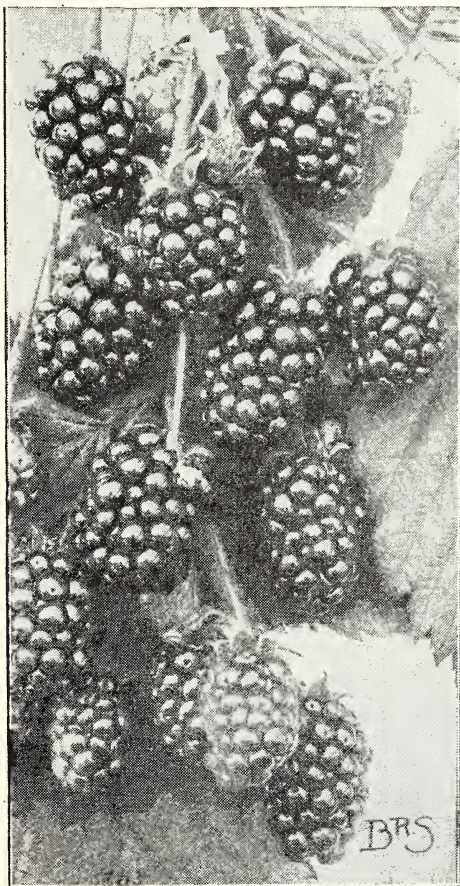
Fry Bros., Lafayette, Ind.

Sirs: I received my shrubs. They came in fine shape and I was more than pleased with the size of them. They were much better than I expected. If they don't thrive and grow it will not be your fault. Thanking you for your service, yours respectfully,

Etta Powell.

PRICE DON'T MEAN ANY-THING

Customers will note in the FRY BROS. catalog that their descriptions of any and all articles give the age, size, etc., and a fair and as reasonable price as possible affixed to this grade of tree or shrub. Any weak or spindling plant is not suitable for your purpose regardless of what price is paid. 10c Nursery stock is only fit for the brush pile or in some cases for transplanting in nursery rows by the expert nurseryman



Snyder Blackberry

We pay all transportation charges. You have no express or parcel post charges to pay on FRY BROS. NURSERY STOCK.

Select Strawberries

Strawberries are of the easiest culture and will thrive in nearly all soils, in which respect they have a wider range of adaptability than any other plant of such economic importance. The Commercial grower still depends on the Standard Varieties. The Everbearing varieties only as yet have their place in the home gardens in spite of the extravagant claims made by many of the plant growers. We urge the commercial grower to study carefully his selection. Everything depends on this if he is to get his berries to market away from the flood season. An extra early or an extra late variety will prove the money maker. We have grown small fruits since 1900 and have found that success hinges on just two things, viz: a good appearing strawberry, and being placed on the market at the right time. We have just the plants for you and our years of experience is back of them to insure your profit.

SEASON FOR DIGGING AND SHIPPING PLANTS

Regardless of what some other concerns will do in the matter of sending out strawberry plants for summer planting the Fry Bros. Nursery will not practice something which means loss to a customer. We will not ship plants after May 25 or through any of the three summer months. For fall planting we can not send out plants till September 25. It takes up to this date for the new runner plants to become matured.

The best time in all the year is March and April for the setting of strawberry plants. We will be able to start sending out plants by middle of March and will aim to get them to you on the day you specify that you have your ground prepared.

In the field set plants in rows 3 feet or a little more apart and the plants about 15 inches apart in the rows. Cultivate well through the summer and when ground freezes in early December place a straw mulch over the rows.

FRY BROS. PRICES ON STRAWBERRY PLANTS

All Carrying Charges Prepaid

SENATOR DUNLAP—25 for 50c; 100 for \$1.15; 500 for \$4.00; 1000 for \$7.00.

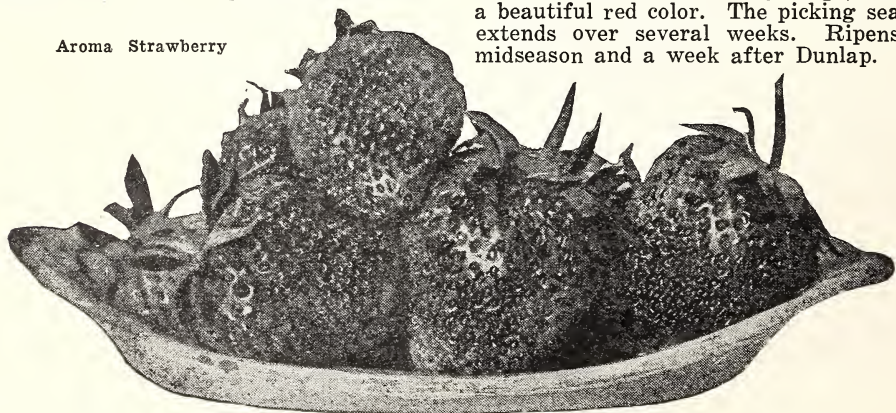
AROMA, GANDY and GIBSON—25 for 55c; 100 for \$1.25; 500 for \$4.75; 1000 for \$8.00.

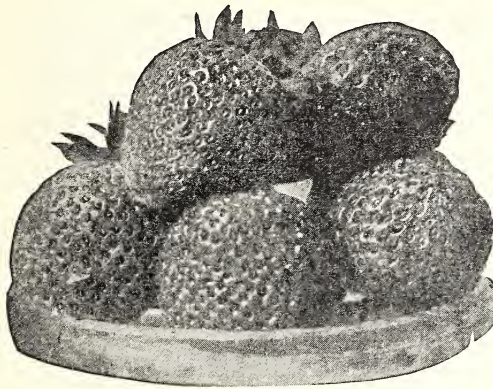
COOPER, PREMIER and HOWARD No. 17—25 for 65c; 100 for \$1.50; 500 for \$6.00; 1000 for \$10.00.

AROMA—Probably the most talked about and best advertised of all the June ripening strawberries. This is because of its great shipping record. A large, firm berry of excellent quality. Has perfect blossoms as do all the varieties we list. Classed as the late ripening sort.

COOPER—A new strawberry introduced 5 years ago and we can honestly recommend it to our customers as a berry of great merit and possesses all the qualities claimed for it. Plants are extra large and strong growers and very productive. Berries also very large, and of a beautiful red color. The picking season extends over several weeks. Ripens in midseason and a week after Dunlap.

Aroma Strawberry





Senator Dunlap Strawberry

GANDY—Ripens in July and the latest of all on the market. Brings high price. Will not stand extended droughts, but if season is favorable will bring the grower more profits than any other variety.

GIBSON—Mid-season. A worthy variety with many points of superiority. Gibson has long roots and stands dry weather in good shape. At its best on a heavy sandy loam.

HOWARD NO. 17—First of all on the market. Will make the commercial grower more money than any other variety in cultivation. First introduced in Indiana by the FRY BROS. NURSERY. Frost resistant, ripens ahead of all the usual drought periods, sure and certain. Grow the wonderful Howard and place your berries on the early market at \$6.00 per crate. Howard not only finds a high market but a ready market. No flood season while the Howard is ripening. Magnificent in appearance, bright red color and long, conical shape that distinguishes it from the Aromas coming up from the south and against which it must compete.

We only wish to sell our customers plants of the variety that will return them expected profits. Study carefully the problem of flood markets and think if you consider it safe to have a large planting of the Mid-season berries that may place you on the flood market period. Many years have we been growers of fruits and we will say that the flood market is the most discouraging factor we ever confronted, even worse than a crop failure.

NO FLOOD MARKET FOR HOWARD NO. 17

On sandy loam in usual springs a large fine berry ripening for the early markets May 15, this is the Howard No. 17. No picking problem, no shipping problem, a berry that holds up under any wet or adverse weather conditions. These are the

secrets of success for the Howard No. 17. Makes just enough runner plants to form a nice fruiting row. Does not make the great mat of plants like many other sorts and for this reason Howard can never be sold cheaply. You will get the absolute true strain of pure and un-mixed plants from the FRY BROS. NURSERY CO.

PREMIER—Closely resembles the Howard. Seems to bloom a few days earlier and so would be a little more frost risk.

SENATOR DUNLAP—Classed by some as an early berry, but ripens through mid-season. This is the "universal berry". Widely planted. Senator Dunlap will stand more drought and wet weather than any other variety. Is a sure cropper and if anyone was planting but one variety of Strawberries he had best set Dunlaps and insure himself against disappointment.

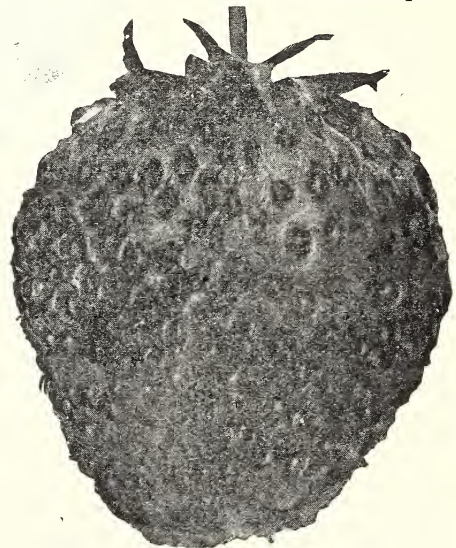
OUR HOWARD NO. 17 A FAVORITE IN OHIO

Bremen, O., May 30, 1927.

Fry Bros., Lafayette, Ind.

Dear Sirs: Received those strawberry plants of yours in 1928. I have grown about 50 different kinds of strawberries and the Howard No. 17 beats any kind I ever saw for large and perfect berries and good quality and looks and a wonderful berry. You sure do tell the truth about your berry plants. A reliable Nursery. I wish you success.

Alfred Strope.

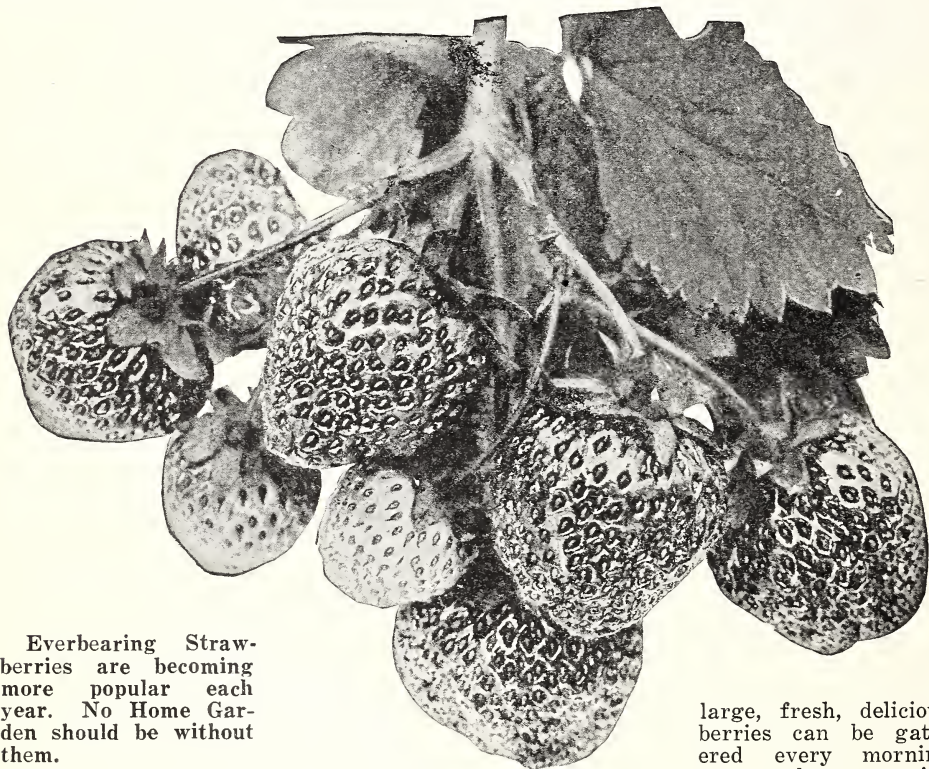


Howard No. 17 Strawberry

Everbearing Strawberries

The Everbearer is a mighty valuable addition to the strawberry world. It is a valuable thing in the home gardens. After many years experimenting, ever since their first introduction, we must tell our customers that we have not as yet a commercial Everbearer and neither has any other nursery for that matter. And again we will say we still earnestly believe we have the best Everbearer of the entire list in the

GIANT NO. 999. There are a very few scattered areas over certain sections where it seems the soil and conditions and also nearby markets make the Everbearers profitable for a large planting. What we say is to apply to general conditions all over Indiana and the surrounding states. The policy of this Nursery is not to advise our customers in the encouragement of a losing investment.



Everbearing Strawberries are becoming more popular each year. No Home Garden should be without them.

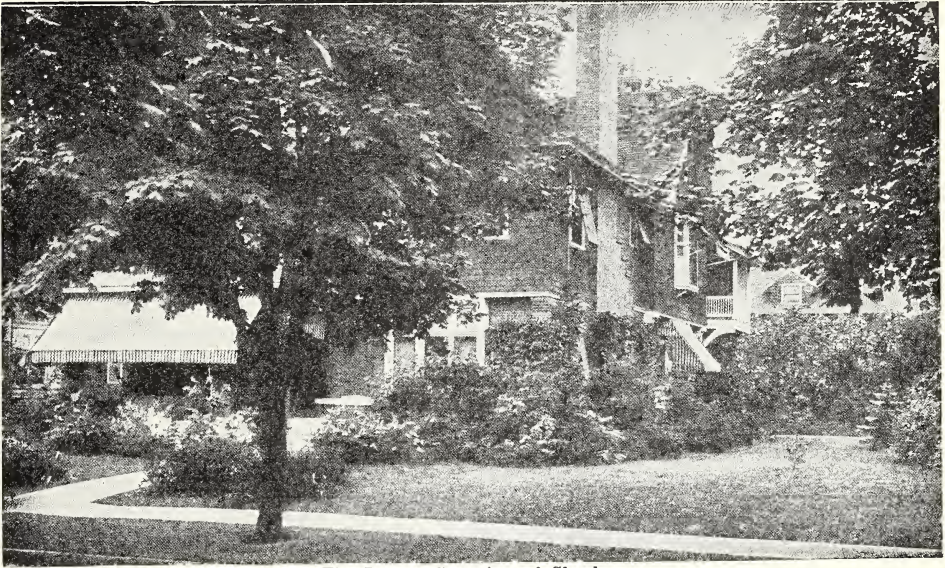
GIANT NO. 999—Our true strain of this fine Everbearer which we have propagated for several years. There is one strong point in favor of the Everbearer, that is if we have severe frosts that may entirely kill off the crop of the standard or June ripening strawberries we can still depend on berries later in the summer when the new blossoms of the Giant No. 999 will insure berries on through the summer and into autumn. This is an ideal berry for the home garden. A row of Everbearers across any garden is indeed a treat, where

large, fresh, delicious berries can be gathered every morning over so long a period

through the year. Blossoms should be kept off the newly set plants till up near July 1 when they have well enough established themselves that they may be allowed to go ahead and bear fruit. Set out and cultivate the same as the standard berries.

PROGRESSIVE—Ripens earlier and over a longer period than any other everbearer. Thrives on most soils. Plants are hardy as far north as Minnesota. Berry has a splendid flavor, sweet and delicious.

Prices of plants of either of the two varieties of Everbearers: 25 for \$1.15; 50 for \$2.00; 100 for \$3.50; 200 for \$5.50.

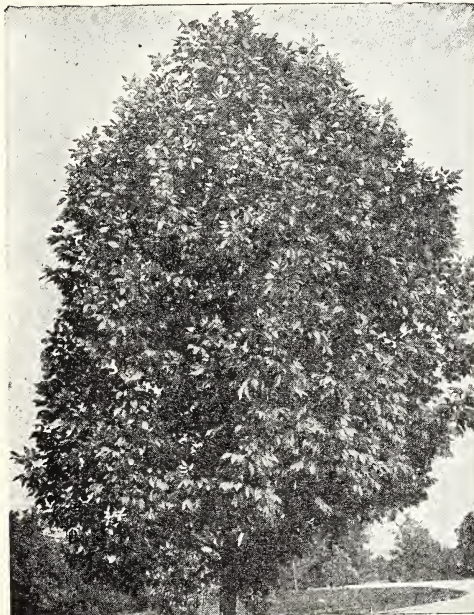


The Proper Grouping of Shrubs

Shade & Ornamental Trees

More and more we are beginning to realize the great value of Trees. They add to the commercial importance of any town or city as well as to its attractiveness and beauty. The advanced operators in real estate realize this and are planting subdivisions and other property well ahead of actual building construction in order to secure quicker sales. We are growing and listing a well selected assortment of trees.

We pay all transportation charges on our Trees.



American Ash

AILANTHUS—Grows to 40 feet. Known also as "Tree of Heaven". Size 6-8 ft. each, \$1.00, 3 for \$2.60; 8-10 ft., each \$1.75.

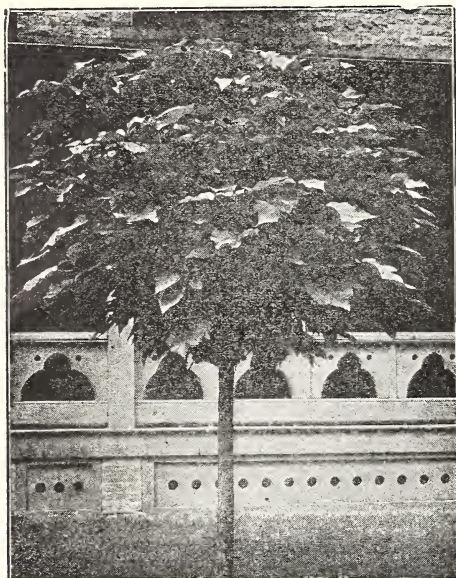
ARALIA SPINOSA—Grows to 15 feet. Also known as Hercules Club, Devil's Walking Stick. White flowers in huge panicles. Size 3-4 ft., each \$1.00.

ASH, AMERICAN—Grows to 60 feet. Of good form and long lived. Size 6-8 feet, each \$1.00, 3 for \$2.25; 8-10 ft., each \$1.50, 3 for \$3.75.

ASH, MOUNTAIN—Grows to 25 feet. A most valuable ornamental. Red berries. Size 6-8 ft., each \$1.75.

CATALPA, SPECIOSA—Grows to 50 feet. Hardy, extremely rapid growth. Size 6-8 ft., each 80c, 6 for \$3.80; 8-10 ft., each \$1.30, 3 for \$3.20.

CATALPA, BUNGEI—Commonly known as the Umbrella Tree. The branches form a globe shaped head. This is one of the most popular trees in our list and particularly desirable for formal effects. Our trees supplied with one year heads on stems 5 feet in height at \$2.75 each and



Catalpa Bungei

on stems 6 feet at \$3.00 each. Can supply the two year heads at 25c more per tree in each size stem.

CRAB, BECHTEL'S FLOWERING—Grows to 10 feet. A fine little tree covered with double fragrant pink blossoms in early May. Size 2-3 feet, each \$1.00; 3-4 feet, each \$1.30.



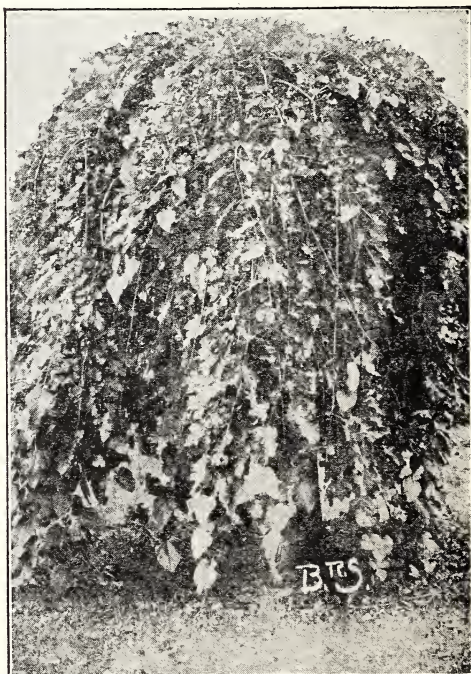
Norway Maple

ELM, AMERICAN—Grows to 80 feet. Best known native tree. Size 6-8 feet, each \$1.00, 3 for \$2.50; 8-10 ft., each \$1.60, 3 for \$4.20.

JUDAS TREE—Grows to 20 feet. Also known as Red Bud. Size 3-4 feet, each 85c; 4-5 ft., each 95c.

MAPLE, SUGAR or HARD—Grow to 75 feet. Famous for its brilliant autumn coloring and many other good qualities. Classed as a permanent shade tree. Sturdy and erect. Slower growth than the soft Maples. Size 6-8 ft., each \$2.25; 8-10 ft., each \$3.00.

MAPLE, NORWAY—Grows to 70 feet. Same habit as the Hard Maples. Foliage turns pale yellow in autumn. Forms a rounded head. Size 6-8 ft., each \$3.25.



Teas Weeping Mulberry

MAPLE, SOFT or SILVER—Grows to 60 feet. Probably the best quick growing tree in our list. Valuable tree where immediate effect is desired. Forms a wide spreading head. Thrives on all soils. Size 5-6 ft., each \$1.00, 6 for \$4.50; 6-8 ft., each \$1.25, 6 for \$5.70.

OAK, RED—Grows to 80 feet. Size 6-8 ft, each \$2.75; 8-10 ft., each \$3.25.

PERSIMMON, AMERICAN—A small tree growing to 30 feet with handsome foliage and bearer of the well known fruits. Size, 3-4 ft., each \$1.00; 4-5 feet, each \$1.50.

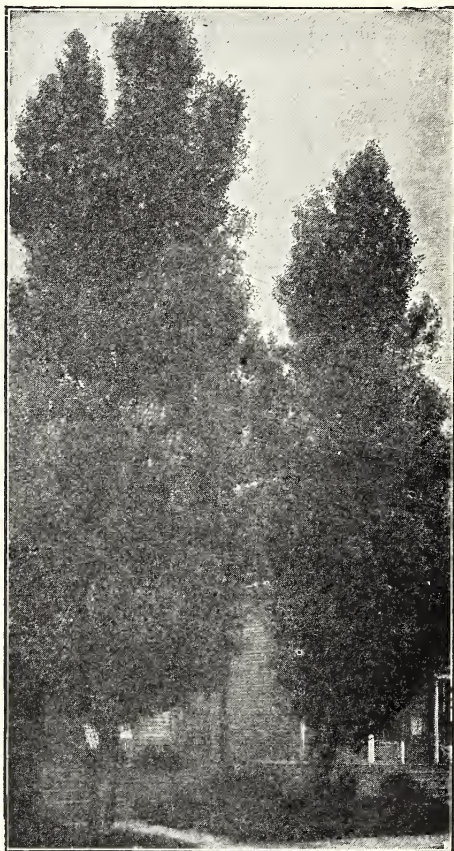
MULBERRY, TEAS WEeping—Perhaps the most formal and distinctive of all small lawn trees. Forms an almost perfect umbrella shaped head whose rounded branches droop to the ground. Succeeds on all soils. Our trees are headed on trunks 5 to 6 feet high. Price each, 1 year old heads, \$4.25.

POPLAR, LOMBARD—Grows to 80 ft. Everywhere a very conspicuous tree on account of its tall, erect, spire like form. Used extensively in landscape work. Size 6-8 ft., each \$1.00, 3 for \$2.70; 8-10 ft., each \$1.30, 3 for \$3.00.

SYCAMORE—Grows to 80 feet. Vigorous, tall, symmetrical and striking in appearance winter and summer. Size 6-8 ft., each \$1.25, 3 for \$3.00; 8-10 ft., each \$1.50, 3 for \$3.80.

TULIP TREE—Grows to 80 feet. Known as Yellow Poplar. A valuable tree of fairly rapid growth. The state tree. Size 5-6 ft., each \$1.40, 3 for \$3.75; 6-8 ft., each \$1.60, 3 for \$4.25.

WILLOWS, WISCONSIN—Grows to 40 feet. A hardy weeping tree. Branches slender and pendulant. Size 6-8 feet, each \$1.10, 3 for \$2.60.



Lombard Poplar



Sycamore Tree

NUT TREES

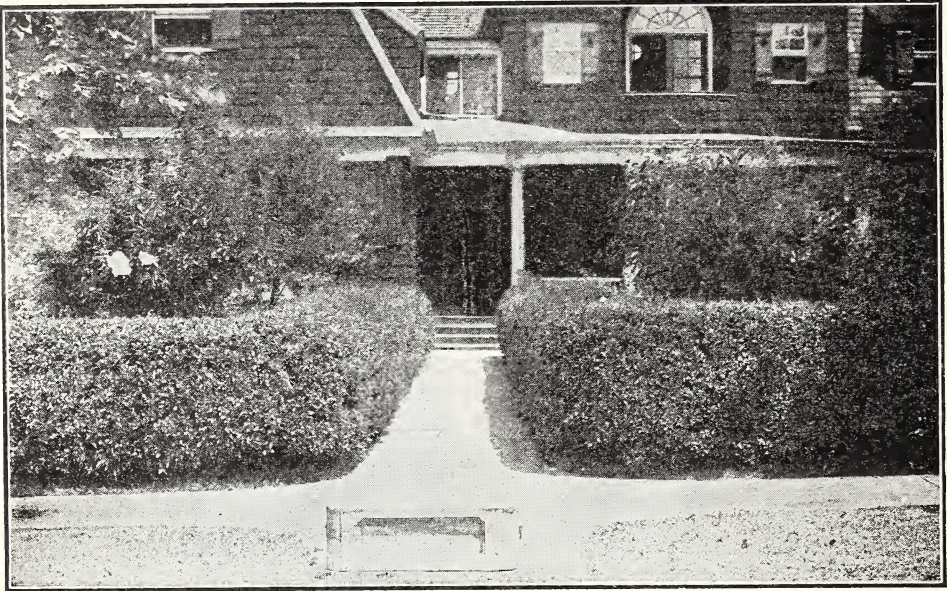
Almost every farm contains land that should be planted to nut trees adapted to the soil. Nuts in many cases pay better than farm crops or fruits.

WALNUT, BLACK—Grows to 80 feet. A valuable lumber and nut bearing tree known to everyone. Size 5-6 ft., each \$1.00, 3 for \$2.70; 6-8 ft., each \$1.30, 3 for \$3.30.

WALNUT, WHITE—Grows to 60 feet. More rapid grower than Black Walnut and more spreading, a very ornamental tree. Known also as "Butternut". Sizes and prices same as Black Walnuts.

WALNUT, JAPAN—Grows to 45 feet. A desirable ornamental tree. Nuts are borne in clusters. Leaves of large size. A vigorous grower. Sizes and prices same as Black Walnut trees.

Place a few shade trees on your lawn to protect your porches and windows through the afternoons from the hot summer sun.



A Privet Hedge

Ornamental Hedges

Leaving the question of beauty aside, hedges are far superior to fences because they get better each year, while fences need painting and repairing and soon have to be replaced. What plants to use for a hedge depends entirely on your taste. We recommend either the Japanese Barberry or the Privets. These are the one that will make you a tight, solid wall. Many people use all the different flowering shrubs, Lilacs, Hydrangeas, Spireas and the like, but you find they don't make the close, dense wall you desire. Our Privet hedges will turn live stock and protect your yard. They are ideal for the outer line of your lawn or lot while the other low growing flowering shrubs are most effectively used for border lines along your walks and drives.

AMoor RIVER, NORTH—This is a variety of extreme hardiness which can be planted with satisfaction everywhere. It is upright in growth, foliage glossy green and clings to the plant till late fall. Stands shearing well. Splendid shrub for mixed borders or for planting as a screen in sunshine or light shade. Set in a single row with plants 10 inches apart will make a solid fence. Size 18-24 inch, each 25c; 12 for \$2.30, 100 for \$12.00; 2-3 ft., each 30c, 12 for \$2.75, 100 for \$14.50; 3-4 ft., each 40c, 12 for \$4.00, 25 for \$6.25.

IBOTA—Also absolutely hardy anywhere in the United States. More horizontal and dense growth than Amoor River. Branches are covered with black berries that hold through the winter. Leaves are of striking appearance after frost turning a bronze color underneath. An Ibota is a real and lasting improvement to any property. Sizes 18-24 inch, each 25c, 12 for \$2.40, 100 for \$12.50; 2-3 ft., each 30c, 12 for \$2.80, 100 for \$15.00.

BARBERRY, JAPANESE—Most ornamental and desirable hedge plant we offer. Used on the most costly estates. Thrives in sun and partial shade. Hardy everywhere. A most beautiful dwarf growing shrub. Planted anywhere on the lawn, as a border planting, at corners, steps, or any place the Barberry fills its place well. The small bright green leaves change to a coppery red in the autumn and the small scarlet berries hang to the bare branches all through the winter. With plants set in single row 10 inches and sheared to a height of 30 inches Barberry will make an impassable hedge line. Our Japanese is in no way associated with the common European Barberry which was destroyed because of its being a host of the wheat rust. Our plants are three years old, field grown and will transplant with certain satisfaction and are an improvement soon as set. Size 12-18 inch, each 25c, 12 for \$2.25, 100 for \$15.50; 18-24 inch, each 35c, 12 for \$3.25, 100 for \$22.50.



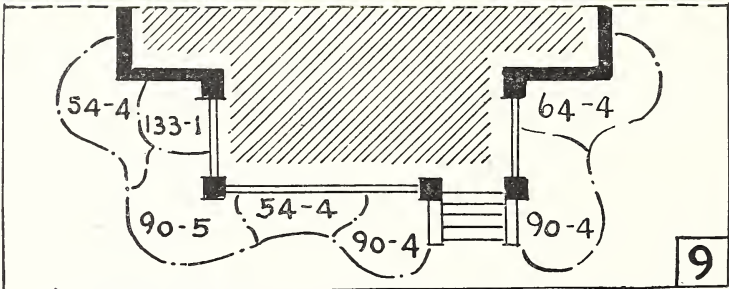
Plantings Suitable for Schools and other Public Buildings



A Charming Combination of Trees, Shrubs and Vines

FOUNDATION PLANTING

Every home needs shrubbery to tie it to the ground, and we are prepared to make suggestions of the desirable shrubs for your purpose if you will submit a sketch showing the direction of sun exposure, distances and location of trees or shrubs already planted and quote you a combined price. Nothing will increase the value of residence property so quickly and permanently as properly planted shrubs and plants arranged in attractive and harmonious combinations which our plans will give. You will find prices listed under shrubbery heading on all of the above planting.



Here is a most effective planting of Japanese Barberry, Everblooming Hydrangea, Red-stem Dogwood with one Persian Lilac to add height. This attractive foundation planting costs only a few dollars. Photo above.

A planting of Fry Bros. large sized shrubs will give you an immediate effect.

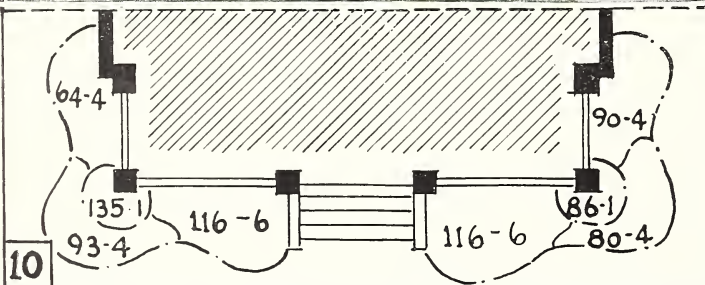


Photo and plan above for a house with a low foundation. The Spirea Anthony Waterer furnishes a bright touch of color with its crimson flowers which are borne from early summer until frost. For accent at the corners taller varieties used.

4 Red Stem Dogwoods, 4 Hydrangea, 1 Tamarix, 12 Spirea, 1 Double Althea, 4 Golden Bell, 4 Iboia Privet are used in the above planting.

Flowers and shrubs begin to increase the attractiveness and desirability of a home as soon as planted, and grow more valuable with the years and will give you pleasure every day in the year. You will live better and more happily in a home surrounded with shrubbery and flowers and shrubs once planted will require far less care than you anticipate, paying manifold for time and attention. Give your home the first consideration.

Hardy Roses

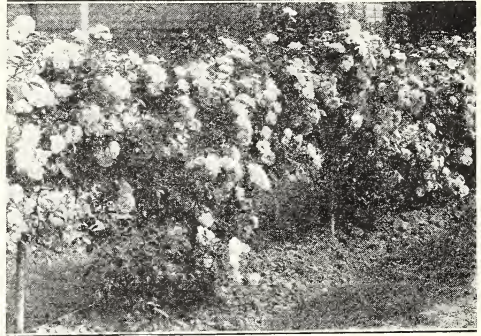
There is no use planting a Rose that is not hardy just because it is an exceptionally free bloomer. Our Roses will stand our winters and are the very best of their class. All our Roses are strong, field grown, 2 and 3 years old. Roses should have locations of plenty of sunshine. In planting, tops should be cut back to 6 inches of the ground.

AMERICAN BEAUTY (Climber)—Color rosy crimson. Flowers large in size. Plant an extra strong grower, making shoots 10 feet and longer in a single season. Hardy and adaptable to many soils. Price each, 90c, 3 for \$2.40.

CRIMSON RAMBLER (Climber)—Judging from demand this is one of the most popular climbing roses in the list. The crimson flowers are borne in heavy clusters, presenting a striking appearance. Price, same as American Beauty.

DOROTHY PERKINS (Climber)—Rapid grower. Flowers shell pink in clusters. Prices, each 60c, 3 for \$1.50.

FRAU K. DRUSCHKI (Bush)—Also known as White American Beauty or Snow Queen. Immense snow white flowers and the finest of its class. A magnificent variety in every respect. Blooms almost continually and is hardy everywhere. The plant is strong and vigorous. Best White Rose we ever saw. Price, each \$1.00, 3 for \$2.50.



A Rose Hedge

GARDENIA (Climber)—Lovely yellow buds that open into beautiful yellow double flowers of bright color. Price, each 75c, 3 for \$1.80.

GEN. JACQUEMINOT (Bush)—The "Jack" rose has long been a favorite, dark crimson variety. Vigorous, fragrant, extremely hardy. Price, each 90c, 3 for \$2.40.

PAUL NEYRON (Bush)—This is the largest of all roses and while it belongs to the Hybrid Perpetuals or June blooming class you will also find it to bloom in the autumn months. Color deep rose pink. Price each 90c, 3 for \$2.40.

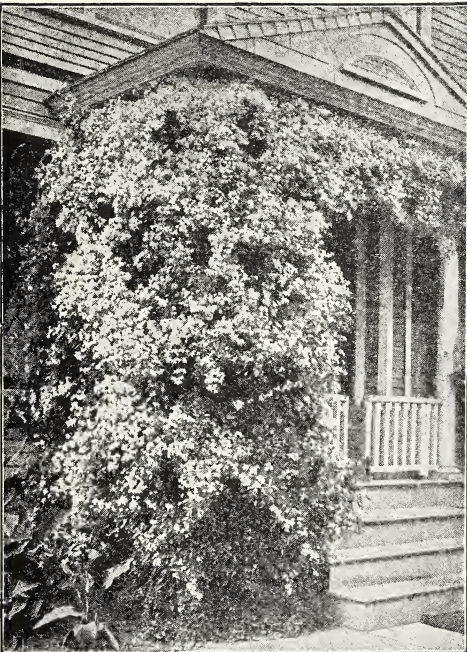
SUNBURST (Bush)—A superior yellow rose of the Everblooming class. Price each, \$1.15, 3 for \$3.00.

Climbing Vines

CLEMATIS, PANICULATA—Proven to be one of the most desirable, useful and beautiful of the hardy vines, being a luxuriant grower and profuse bloomer; flowers white in late summer. We recommend it as one of the best. Price each strong 2 year old, 60c; 3 for \$1.50.

DUTCHMAN'S PIPE—A very rapid growing vine which on account of its very large, heart shaped leaves, is desirable when dense shade is required. Flowers yellowish brown. Thrives in shade. Price strong two year old, each 70c.

WISTARIA, PURPLE—Purple flowers in June. A heavy vine which makes an enormous growth after it becomes well established. Very hardy and robust. Price, each 2 yr old, 65c, 3 for \$1.60.



Clematis, Paniculata

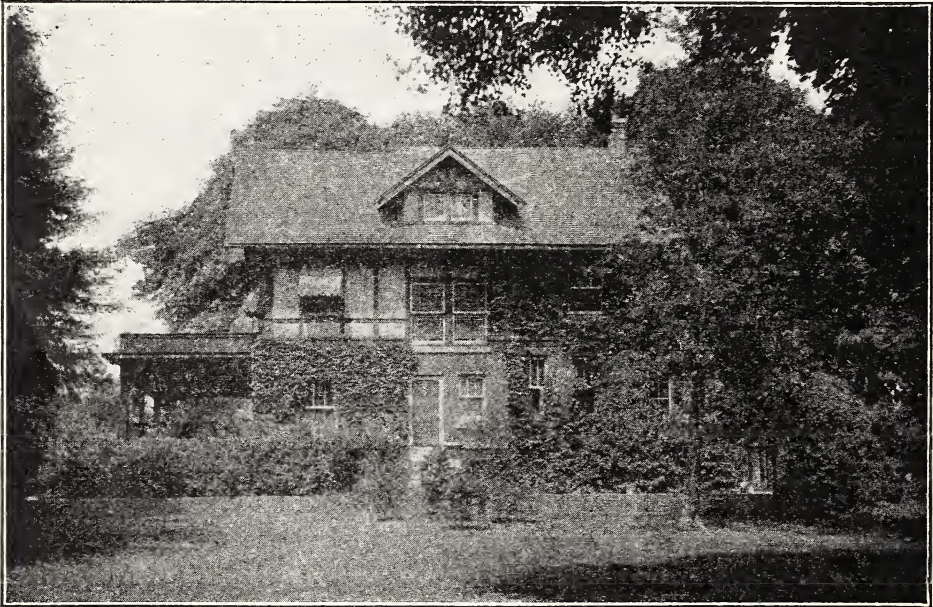
Peonies

Peonies are of the easiest culture and when once planted they thrive for many years with little attention. They are almost immune to insect ravages and disease. In moving all our Peonie blocks this last fall we got a mixture in some varieties and so we are listing all our Peonies this time by Color only and we guarantee them to bloom in the color we label, but we have not kept tract of the exact variety. Some varieties will be found among them that are worth from \$3.00 to \$7.00. All are one of the best

types in general cultivation. We supply strong divisions of 3 to 5 eyes. Set roots so eyes will be 3 to 4 inches below surface. Prices, white and pink blooming types, each 50c, 3 for \$1.25. Red colors, each 60c 3 for \$1.50.

Yucca

FILAMENTOSA—A sub-tropical plant resembling the Century plant in foliage. Long, narrow green leaves with tall spikes 3 to 5 feet high, of large bell-shaped, white blossoms resembling the Lily. Price, strong 2 year plants, each 50c, 3 for \$1.15.



An Example of Proper Planting

Ornamental Shrubbery

Among the Shrubs we offer here you will find a full range of types from the low dwarfs to the large forms of shrubbery—trees. Then, too, a complete color range in flowers and foliage can be selected for bloom from early spring until late fall. After the name of each shrub we give the height it is expected to reach at maturity. These points will guide you where to plant the different ones. Follow your taste as to color and the rule of setting tall shrubs back of lower ones. Plant shrubs where they have a sunshine period of at least 6 hours each day. Some will stand shadier places and if so we state this in description of each. All shrubs we send out will be heavily branched and bushy, 2 to 4 year field grown and will give immediate effect soon as planted around your home. As with all other stock we pay transportation charges.

ALMONDS, FLOWERING—8 feet. Double pink flowers in May. An ornament to any lawn. Price, 2-3 feet, each \$1.10.

ALTHEA—10 feet. Known as "Hibiscus" and Rose of Sharon. Sometimes planted for hedges. Erect, growing,

blooms in July, August and September. Can supply in colors, white, purple and red. Price, 2-3 feet, each 50c, 3 for \$1.20.

BUDDLEIA—5 feet. Often called Butterfly Bush and Summer Lilac. Purple spike blooms through July and August. Price, 2 year, each 70c; 1 year each, 55c.

CORNUS, STOLONIFERA—7 feet. A red branched shrub which is particularly desirable for its attractive all year round appearance. Price 4-5 feet, each 60c, 3 for \$1.30.

CURRENT, INDIAN RED—5 feet. Known as Coral Berry. Low shrub suitable for planting in sunshine or shade. Attractive red berries. 18-24 inch, each 40c, 3 for 95c; 2-3 ft., each 45c, 3 for \$1.05.

CURRENT, YELLOW FLOWERING—7 feet. Thrives in shade. Blooms in early spring. Price, 2-3 feet, each 50c.

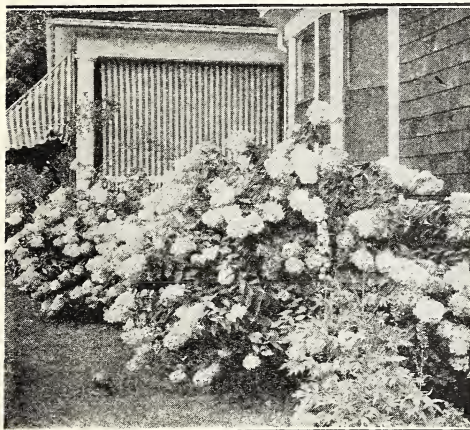
DEUTZIA, PRIDE OF ROCHESTER—7 feet. Blooms in late May. Erect growing with the habit of the Philadelphus. Hardy, vigorous and a white blooming shrub that fits in well anywhere, at corners, back of lower shrubs and entrances. Price, size 18-24 inch, each 40c, 3 for \$1.00; 2-3 ft., each 50c, 3 for \$1.20.



Forsythia

HIGH BUSH CRANBERRY—10 feet. Blooms in May. Will succeed in shade. A very desirable Ornamental shrub with white flowers followed by red berries resembling cranberries. These scarlet berries are likely the most ornamental of all the fruit bearing shrubs. In growth and foliage it belongs to the Snowball family. Prices, size 18-24 inch, each 55c, 3 for \$1.25; 2-3 ft., each 65c, 3 for \$1.50.

HYDRANGEA, ARBORESCENS GRANDIFLORA—4 feet. Will do well in shady places. Resembles a low growing Snowball with its large clusters of pure white flowers. Starts in June and will bloom continually through the summer. Price each, 12-18 inch, 40c, 3 for \$1.00; 18-24 inch each 70c, 3 for \$2.00.



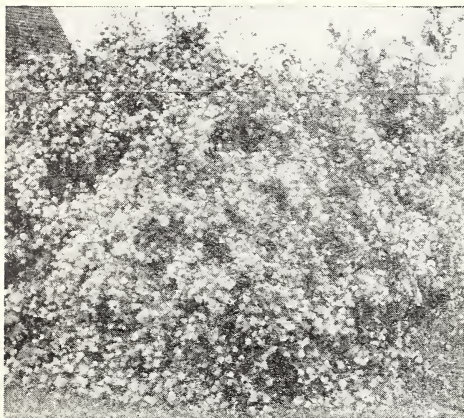
Hydrangea

FORSYTHIA, INTERMEDIA—9 feet. Well remembered as the Golden Bell. One of the old fashioned shrubs. Often blooms before snow is off the ground in March. Its glinting yellow flowers are very showy as they announce the coming of spring. Will thrive on north side of house and shady places. Size 3-4 feet, each 50c, 3 for \$1.30.

HONEYSUCKLE, TARTARIAN, PINK—12 feet. These plants are in great demand for shrubbery groups, tall screens, borders or planting at lot corners and as individual specimens. The foliage is dense and disease resistant. Flowers are either pink or white, followed by attractive coral-red berries in August. As these shrubs grow to full height they may be cut back in the center and caused to grow broader and lower. A very desirable specimen. Size 18-24 inch, each 40c, 3 for \$1.00; 2-3 feet, each 50c, 3 for \$1.20.



Deutzia



Philadelphus

HYDRANGEA, PANICULATA GRANDIFLORA—7 feet. Among the medium sized shrubs this is one of the most showy. The great flowers are produced in August andn September, when very few shrubs are in flower. As autumn approaches the flowers turn to pink and finally bronze. Size, 18-24 inch, each 60c, 3 for \$1.50; 2-3 ft. each, 75c; 3 for \$1.75.

PHILADELPHUS CORONARUS—10 feet. Sometimes wrongly called "Syringa". One of the old favorites in shrubs. Pure white, highly scented flowers in June. Very robust and vigorous growing. Derives its common name "Mock Orange" from its resemblance to orange blossoms. Size, 2-3 ft., each 45c, 3 for \$1.15; 3-4 ft., each 60c, 3 for \$1.50.



Lilac, Purple

QUINCE, JAPAN—6 feet. One of the early spring blooming shrubs of great merit. Flowers are scarlet and borne in such great profusion in April as to well warrant the name "Burning Bush". Extremely attractive. Size 18-24 inch, each 60c, 3 for \$1.25.

SNOWBALL—15 feet. Well known old fashioned flower suitable for specimen or mass planting. Vigorous and hardy. Late May. Size 18-24 inch, each 75c.



Snowball

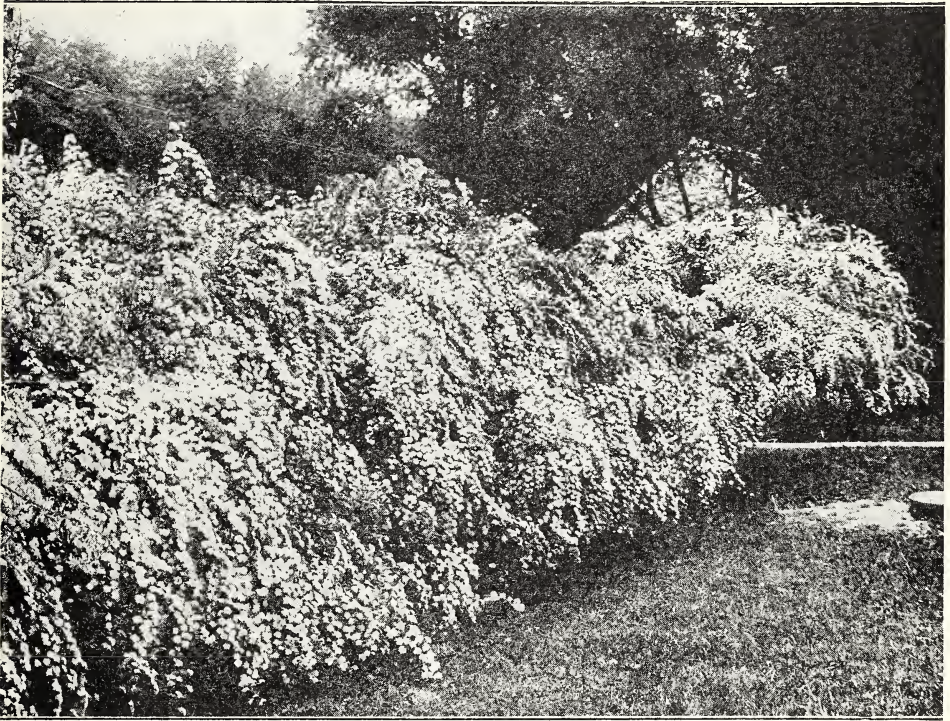
SNOWBERRY—4 feet. Suitable for shady conditions. Dwarf growing with snow-white, waxen berries which last well into winter. Size 18-24 inch, each 40c, 3 for \$1.00; 2-3 ft., each 50c, 3 for \$1.20.

LILAC, WHITE—15 feet. Same as the Purple Lilac except blooms are white. Same price as the purple.

LILAC, PURPLE—15 feet. Perhaps the oldest of all the shrubs. From the standpoint of fragrance and beauty the Lilacs are unsurpassed. Blooms in late April. Size 2-3 ft., each 75c, 3 for \$1.80.

LILAC, PERSIAN—5 feet. Dwarfish growth slender branches, purple bloom in April and sometimes blooms through the autumn. Size 18-24 inch, each 75c, 3 for \$1.90.

The Spirea—A Most Popular Shrub



All the Spireas bloom extravagantly. This family contains more attractive varieties than any other. They range in height from dwarf to tall, color of blossoms from white to red, and period of bloom from early April to August. There is a great variety in their inflorescence and in the habit of the shrubs, so there can be no danger of monotony in such a collection. All the species are very hardy, easily grown, and will be found useful for specimens, groups, screens, borders ornamental hedges.

SPIREA ANTHONY WATERER—2 feet. This is probably the most desirable dwarf hardy shrub for the foreground of shrubbery borders, along porches and foundations or in any place where a low growing shrub is required. The Anthony Waterer will bloom all summer long. Flowers are red. Price 12-18 inch, each 45c, 3 for \$1.10.

SPIREA, BILLARDI—7 feet. A very hardy, upright, vigorous growing shrub which is in bloom from early summer till fall. The lilac-pink flowers are borne in spikes from 3 to 5 inches long, making the plant very showy and attractive. Easily satisfied as to soil and environment. Size 2-3 ft., each 50c

SPIREA, GOLDEN—9 feet. Strong, growing shrub with yellow tinted foliage and double white flowers. June. Very conspicuous and beautiful as the new



Spirea Frobellei

growing leaves appear in spring. Size 3-4 ft., each 60c; 4-5 ft., each 70c, 3 for \$2.00.

SPIREA FROBELLEI—3 feet. Has large panicles of deep rosy bloom and new blooms set as the old fade. Absolutely hardy and suitable for border-planting along walks, etc. Most charming as the new leaves appear in April. Should be used in every planting. Our stock of plants are extra heavy, bushy and broad topped. Price 12-18 inch, each 35c, 6 for \$1.80; 18-24 inch, each 45c; 5 for \$2.25.

SPIREA THUNBERGII—4 feet. Of dwarf habit and round, graceful form. Innumerable small white flowers appear in early spring ahead of the Bridal Wreath by a week or ten days. The branches are slender and drooping and the narrow bright green leaves give the plant a soft, feathery appearance. This shrub set with Barberry makes a most charming combination. Size 12-18 inch, each 45c, 3 for \$1.10.

SPIREA VAN HOUTTE—6 feet. This fine shrub is the best known and probably the most desirable of all shrubs offered by nurserymen. It surpasses all Spireas in its stately beauty and gracefulness. The bush is a strong, upright grower, but the slender branches become drooped under its load of magnificent flowers in May and June. The flowers appear in great clusters and whorls forming cylindrical white plumes. Spirea Van Houtte is most surely a thing of great beauty whether planted singly, for screen effects, border plant-



Weigela

ing, or for hedge lines. And best of all Van Houtte does not lose its value when the blooming period is ended, this for the reason that it has a foliage which is delicate in form, unusually rich in color and abundance. When in bloom the bush resembles a mound or bank of snow. The effect is one long to be remembered by those fortunate as to have them around their home. The plants we supply are 3 and 4 year old in our rows and are not the long whips or single stems often sent out, but are heavy bushy plants with many branches. They will bloom the first summer if you will plant them in early spring. Our size of 3-4 feet have much blooming wood. Size 18-24 inch, each 30c, 6 for \$1.50; 2-3 ft., each 45c, 6 for \$2.40; 3-4 ft., each 60c, 3 for \$1.55.

SUMAC, SMOOTH—12 feet. This cultivated form of Sumac is a picturesque, robust shrub. In autumn the foliage and fruit is brilliant scarlet. Size 5-6 ft. each 70c; 6-8 ft., each 85c.

TAMARIX, AFRICANA—12 feet. Very beautiful shrub and should be more largely planted. Small light green leaves like those of the Juniper. The delicate pinkish flowers are borne in spikes in May. Size 2-3 ft., each 40c, 3 for \$1.10.

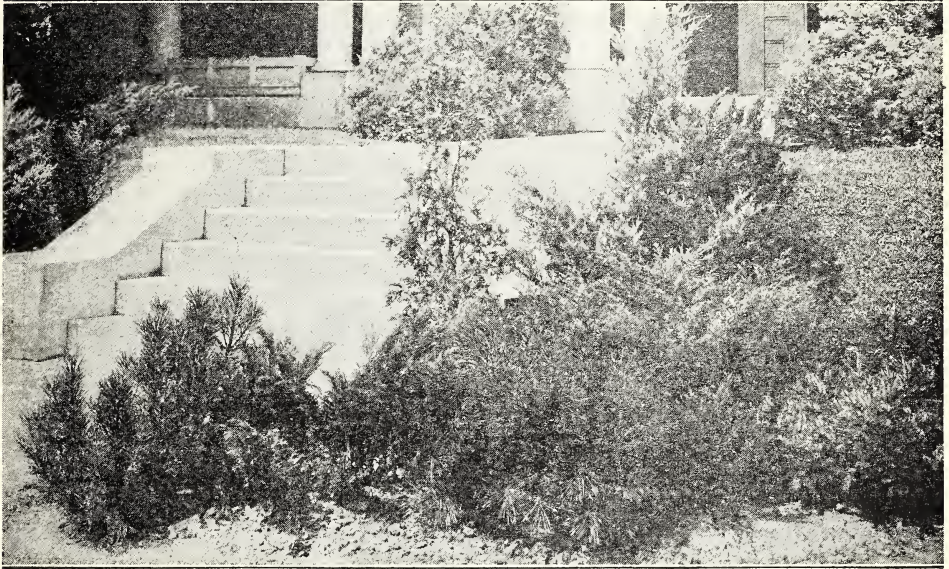
WEIGELA, ROSEA—6 feet. Fine rose colored trumpet shaped flowers. Plant is of upright, compact growth; blooms in early May. Size 2-3 ft., each 75c, 3 for \$1.90.



Spirea Thunbergii

Scattered over our Nursery Ground we have a number of different items in different sizes in too small amounts to list in this catalog, and so we are always glad to have your inquiries on any odds or ends you may wish. We might have them and will be very glad to supply you.

Select Evergreens



To many lovers of beautiful landscapes the Evergreens make an appeal unsatisfied by any other class of plant life. Winter and summer, year in and year out the Evergreens stand out in the landscape fresh, green and full of cheer. They contribute a perpetual beauty which no other tree or shrub can supply.

There have been many failures in the past in the transplanting of the Evergreen. They simply will not stand exposure at the time of planting. If the resinous sap in the roots is allowed to become dry before getting your tree set, or if the surrounding dirt is allowed to become dry and hard before the roots have had a chance to grow some and establish themselves, failure is almost certain. The method in which the FRY. BROS. prepare their trees for shipment removes these chances for our customers. Regardless of size of any tree we list here we will dig them with a ball of dirt and this will be secured to the roots by heavy burlap, carefully sewed. In this way the Evergreen will reach you in the same dirt in which it grew in our Nursery. The planter simply digs a hole big enough to receive the "balled" Evergreens. Don't remove the burlap, it quickly rots away and the little rootlets grow through it.

Again we say success with our Evergreens is a certainty.

ARBOR VITAE, AMERICAN—A fine type of Evergreen with fan-like foliage. Although it eventually grows to 35 feet it can be sheared to conform to desired shapes. Well known as White Cedar. Hardy and vigorous. Size 18-24 inch, each \$1.50; 2-3 ft., each \$2.40.

ARBOR VITAE, PYRAMIDAL—One of the costly types of Evergreens. One of the most desirable of all the Arbor Vitae. Its excellent foliage and pyramidal form lends character to any planting. Size 12-15 inches each \$2.50, 3 for \$6.50.

ARBOR VITAE, GLOBOSA—We have quite a number of mighty pretty trees in



Remember, all Evergreens regardless of size will be shipped with ball of dirt and burlapped. All transportation charges prepaid.

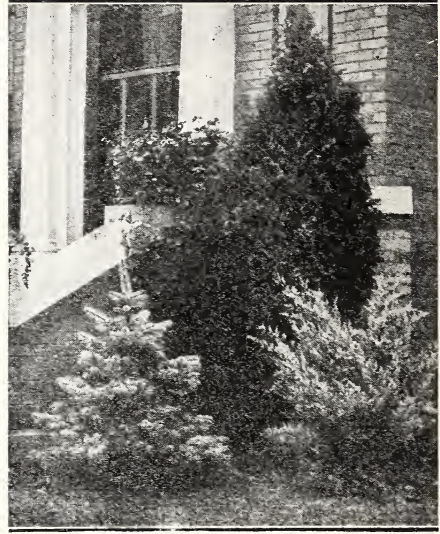
this type and so our prices are below the average considering their true perfect form and size. As indicated by the name they are globe shape Arbor Vitaes and dwarf growth, seldom reaching a height of over 3 feet. They are naturally as broad as their height but may be sheared to different shapes to form cones or border bases. Very effective set at corners or entrances of steps or edges of walks or drives. Size 12-15 inches, each \$2.75, 3 for \$6.50.

JUNIPER, IRISH—A slender, upright growing Evergreen of very formal appearance, foliage being bluish green; grows to 10 feet. Size 2-3 ft., each \$2.75. Size 3-4 ft., each \$4.25.

PINE, AUSTRIAN—Quick growing, upright with large giant limbs, long needles. Grows to 50 feet. Foliage dark green. Hardy. Size 18-24 inch, each \$1.60; 2-3 ft., each \$2.75.

PINE, MUGHO—Dwarf, spreading bush like pine, whose breadth is usually twice its height. Size 10-12 inch, each \$2.50.

SPRUCE, NORWAY—A first class, all purpose Spruce of the true Christmas tree type. It is rapid growing, hardy and fine



Evergreen Corner Planting

appearing. A beauty on any lawn. At maturity reaches 70 feet. Size 12-15 inch, each 90c, 3 for \$2.50; 15-18 inch, each \$1.25, 3 for \$3.25.

VALUABLE SUGGESTIONS

“SELECTION”—This is likely the most important thing in all matters pertaining to Nursery Stock. In other words plant the “Right Thing.” For gain or profit or a simple ornamental planting bear this in mind and plan ahead of the day you are ready for planting. We are sure the facts stated in our catalogue from actual experience and long observations will aid you greatly.



Our Trees bear fruit young ,



Amoor River Privet

HEDGES and HEDGING

No other plants can add as much to the exclusiveness and beauty of a home as the hedges. We supply only the hardy type of Privet, which can be trimmed into formal shapes, and will not winter kill, but quickly grow into a solid fence that will be permanent.

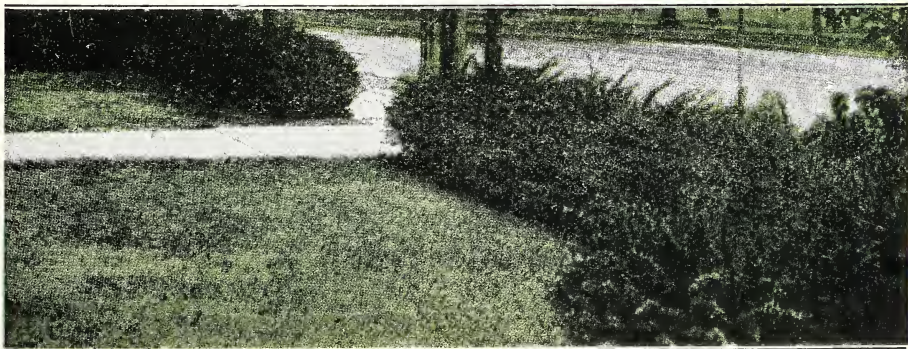
The Barberry is a beautiful ornamental shrub that is used liberally in all kinds of ornamental plantings, but makes a perfect naturalistic hedge, turning to bronze and red in the fall. With bright red berries enduring through the winter. See prices on page 24.



Althea

There are a number of high growing shrubs that make ornamental flowering hedges, but few of them exceed the Althea, "Rose of Sharon", in their cleanly habits. This beautiful shrub grows slowly after it reaches about four feet high and blossoms profusely with flowers of red, white, blue and purple shades. The flowers are either single or double as preferred.

If you want a flowering hedge to divide your lawn or screen a part of your grounds write us for further information. Prices of flowering shrubs see page 26.



Japanese Barberry

An Apple Orchard

Apple orchards add immeasurably to the value of a farm even before they come into bearing, and are necessary for its completeness as a home. It is a recognized fact that of all fruits the apple is the most important, as it may be had fresh the year around. As a money crop they give larger net return per acre than any other crop. See page 4.



Stayman's Winesap



Yellow Transparent

FRY
Brothers
Nursery
at
Lafayette, Ind.

*"Where Hardy
Nursery Stock is
Grown"*



Duchess